



**November 2021**

[JOIN MIM TODAY](#)



## **MASONRY MATTERS**

---

### **CMU Checkoff: It's Game Time!**

The referendum voting period for the CMU Checkoff program is open through November 15 and now is the time to unite as an industry and support the program with a yes vote.

### **Why vote yes?**

The CMU Checkoff will:



- Help the industry regain market share through partnerships, national advertising campaigns and technology-forward design tools.
- Support both national and regional programs, with at least half of the checkoff dollars collected focused on tackling issues and opportunities unique to regions.
- Ensure a legacy of block that will be passed on to the next generation of producers.
- Have a positive impact on the entire industry with support from mason contractors across the country.
- Take us further than we could ever accomplish alone. Every producer will have access to a team of professionals—including marketers, researchers, code experts, design associates and more—working to build preference and demand for CMU every day.

## How it works

Only block producers will contribute to the checkoff and make the decisions on how the funds are invested. The diverse nature of these producers, representing every facet of our industry, will ensure our checkoff dollars benefit every block producer, big or small, regional or national.

A stronger future for all of us starts with you! Vote yes and build a better future. You can read more about the CMU Checkoff program [here](#).



## From the Desk of Phil Ledent

October was Manufacturing Month in the U.S. As we shift to November, I would like to reflect on the variety of manufactured units the masonry industry has available. Whether it's a manufactured stone veneer going up on a hotel, brick masonry veneer providing durability to a school, or a loadbearing single-wythe CMU warehouse; the masonry industry always has solutions to meet society's needs. The Masonry Institute of Michigan has been successful in showing owners, architects, engineers and construction teams how using

masonry can save both time and money on projects. In honor of Manufacturing Month, the Masonry Institute of Michigan took students from the Construction Engineering Technology (CET) program at the University of Toledo to Tri County Block & Brick to better understand all that goes into the manufacture of CMU. The Masonry Institute of Michigan has been instrumental in teaching University of Toledo students and has helped to integrate masonry design into their core curriculum to promote all the advantages that masonry has to offer. To that end, we ask all our members and non-members alike: How can masonry help make life easier on your next project?





# MEMBER SPOTLIGHT



## The Member Spotlight

The MIM is advancing the masonry industry thanks to our members who bring a wealth of experience and expertise to the organization, and we are honored to work with them to promote the best building system in the world. To recognize our members' contributions to the masonry industry, the MIM will be highlighting different members in the coming months. In this month's issue, we are pleased to shine the light on the following MIM members:



**Albaugh Masonry  
Stone & Tile**

[Learn More](#)



**Arisco Contracting Group**

[Learn More](#)



**Baker Construction Co.**

[Learn More](#)



We will continue to spotlight members on our blog and on our social media channels. Please reach out to Phil Ledent at [phil@masonryinfo.org](mailto:phil@masonryinfo.org) if you would like to see your organization recognized.

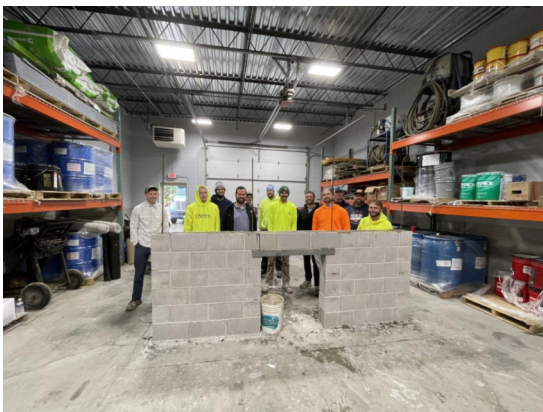
## You Ought to Be in Pictures!

Would you like to see your team or projects showcased on the MIM website? Simply send us your pics by November 30, 2021, and, if your photo is selected, you'll receive some great MIM swag and see your picture on our homepage for the entire month of December. Photos should be submitted to [phil@masonryinfo.org](mailto:phil@masonryinfo.org). Please include a description and names of individuals if applicable.

## NEW Cost Guide

The MIM is pleased to unveil our *Cost Guide* which was developed to showcase the value that masonry can bring to your next project. The *Cost Guide* includes wall square foot costs for many different wall assemblies and is intended to be used to evaluate masonry versus competing materials. We would like to give a special thanks to members of the MIM Contractor standing committee and previous Executive Director Dan Zechmeister for developing a new tool to estimate the cost of masonry projects. Find our new *Cost Guide* here: [MIM Cost Guide](#).

## In Case You Missed It



The cement and concrete industry have developed **The Portland Cement Association (PCA) Roadmap to Carbon Neutrality** which outlines the opportunities and actions needed to reach carbon neutrality by 2050. The Roadmap involves the entire value chain and leverages relationships at every step of the way,

## Calendar of Events

### November:

**2** - IMI Masonry Movement Joints webinar. Register [here](#). (Noon – 1pm)

**3** - MIM Generic Wall Design Committee (9am – noon)

**5** - Michigan Masonry Coalition Annual Meeting

NCMA Webinar: **New Thermal Property Software for Masonry** (1pm)

**10** - MIM Flashing Masonry Webinar: Register [here](#). (Noon – 1pm)

demonstrating to the world that this industry can address climate change with ambition and audacity.

The **Dodge Momentum Index**, gained 11 percent in September to 164.9 (2000=100) from the revised August reading of 148.0. The Momentum Index, issued by Dodge Construction Network, is a monthly measure of the initial report for nonresidential building projects in planning, which have been shown to lead construction spending for nonresidential buildings by a full year. The gain in the Momentum Index and its components in September is a sign that owners and developers are looking beyond current concerns and are moving forward with projects to meet demand.

With a strong commitment to continuing education, **Leidal & Hart Mason Contractors, Inc.** recently took advantage of the **MIM Grouting Workshop** program focused on placement of steel reinforcement and grouting for hollow unit masonry based on the current Michigan Building Code.

The Time for Change consortium held the first-ever **Construction Inclusion Week** in October to foster conversations that create alignment and take us further on the journey for our people and industry partners. "If we genuinely want to attract, retain, and develop the best talent for our industry and maximize the diversity of our suppliers, we must grow our industry's culture to be truly inclusive."

**IMI** Practical Detailing of Structural Concrete Masonry Design. Register [here](#). (Noon – 1pm)

**15** - Last date to vote for **CMU Checkoff**

**16** - IMI Creative & Cost-Effective Masonry Options. Register [here](#). (Noon – 1pm)

**24** - MIM Movement Control Webinar: Register [here](#). (Noon – 1pm)

**30** - IMI Stone Veneer Assemblies: Design & Detailing Considerations. Register [here](#). (Noon – 1pm)

## December:

**1** - MIM Generic Wall Design Committee. Join virtually [here](#). (9am – noon)

**8** - MIM Multi-Wythe Masonry Walls Webinar. Register [here](#). (Noon – 1pm)

Professional Development

Tools & Resources

Membership Directory

## Tip of the Month

Use ungrouted and unreinforced 6-inch CMU for interior walls. It's an easy and economical replacement for six-inch wood stud walls. Use the **IMI Masonry Partition Software** to see how!



24725 W. Twelve Mile Rd., Suite 390  
Southfield, MI 48034

Phone: 313-212-5784

Email Us