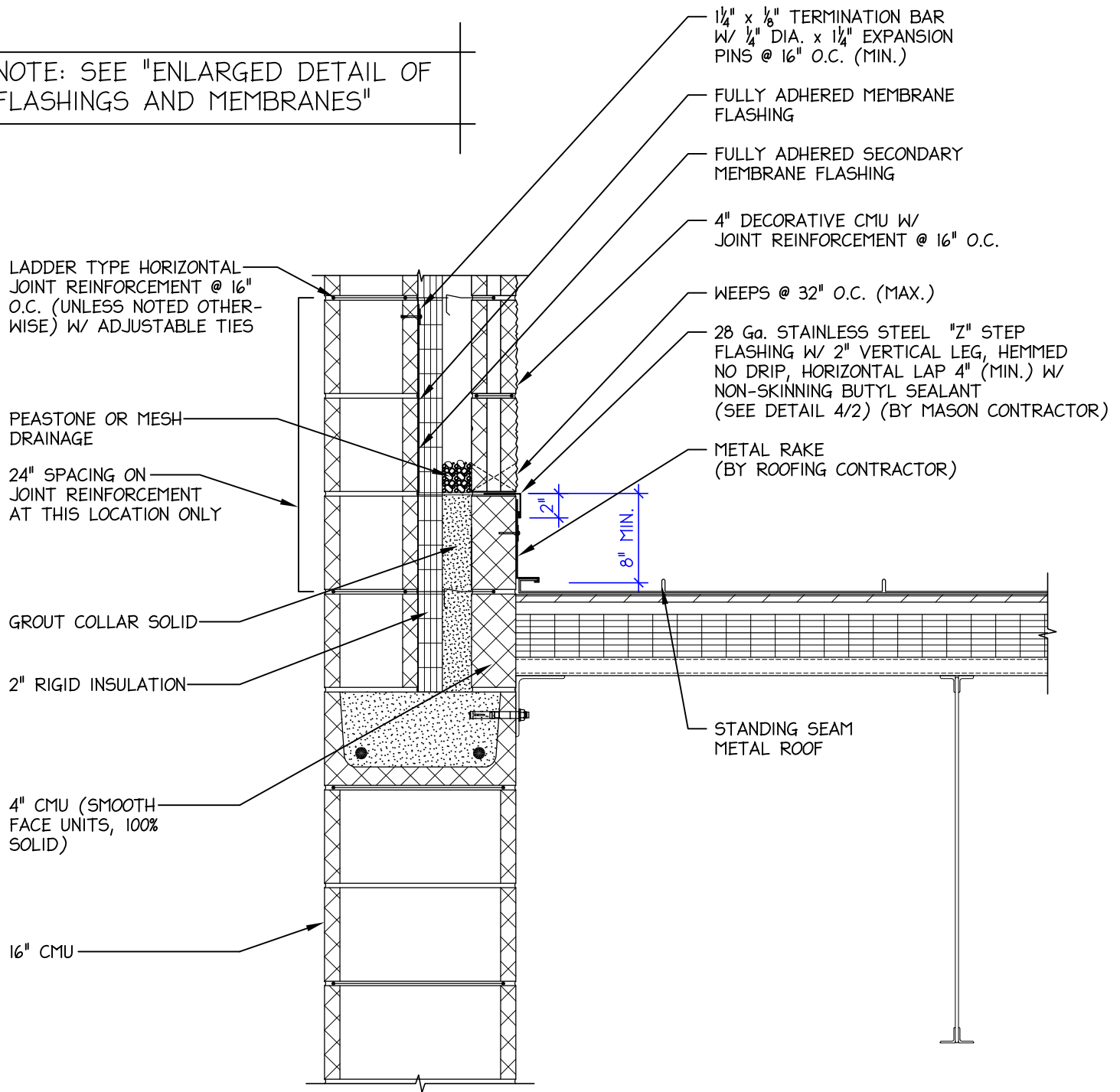


NOTE: SEE "ENLARGED DETAIL OF FLASHINGS AND MEMBRANES"



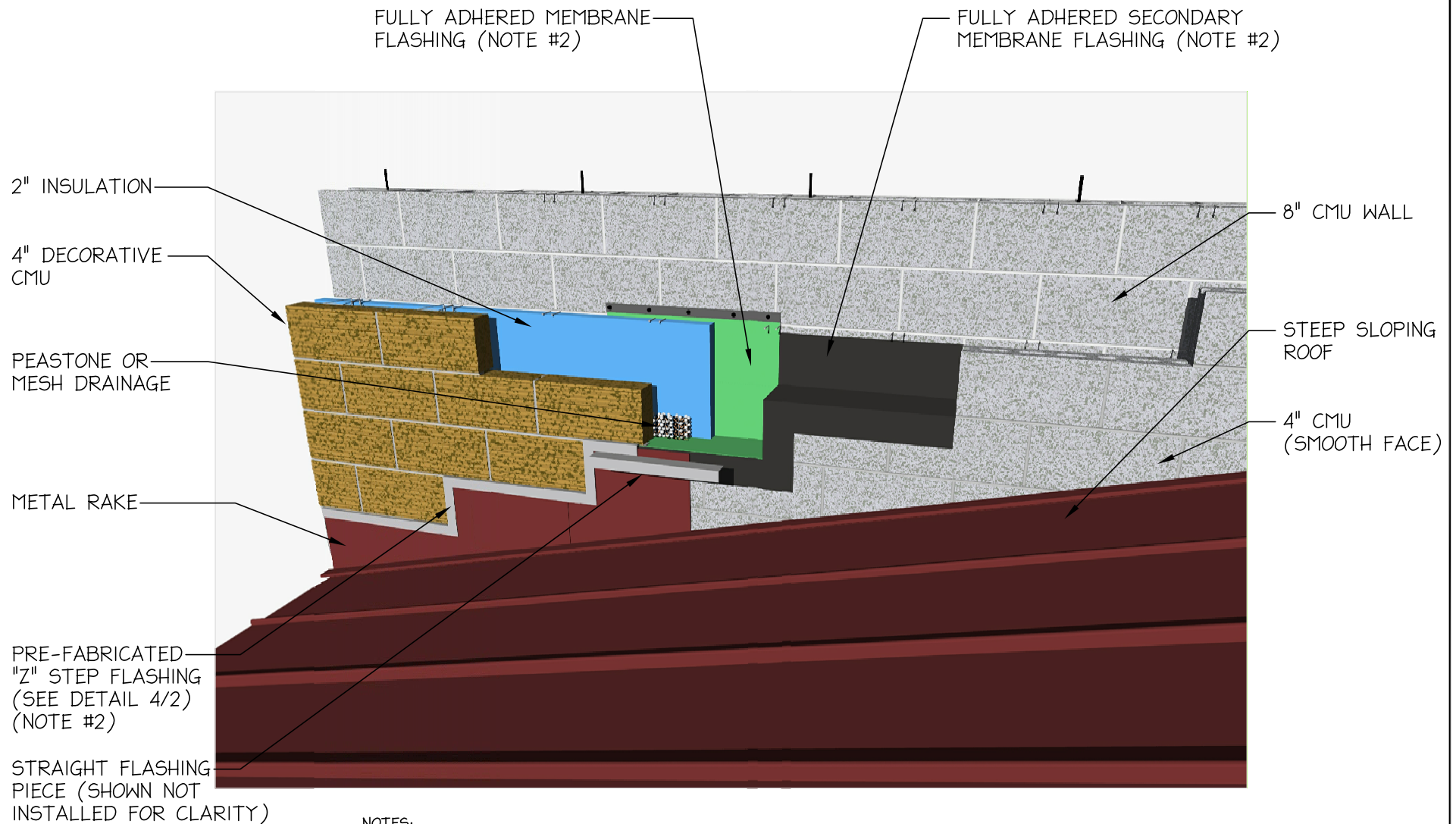
SCALE: 1"=1'-0"

(STEP-FLASHED VERSION)

REVISED: 12-15-2008

NOTES:

- "STEEP SLOPE" ROOFS ARE DEFINED AS ROOFS WITH A SLOPE OF 3:12 (14°) OR GREATER.



NOTES:

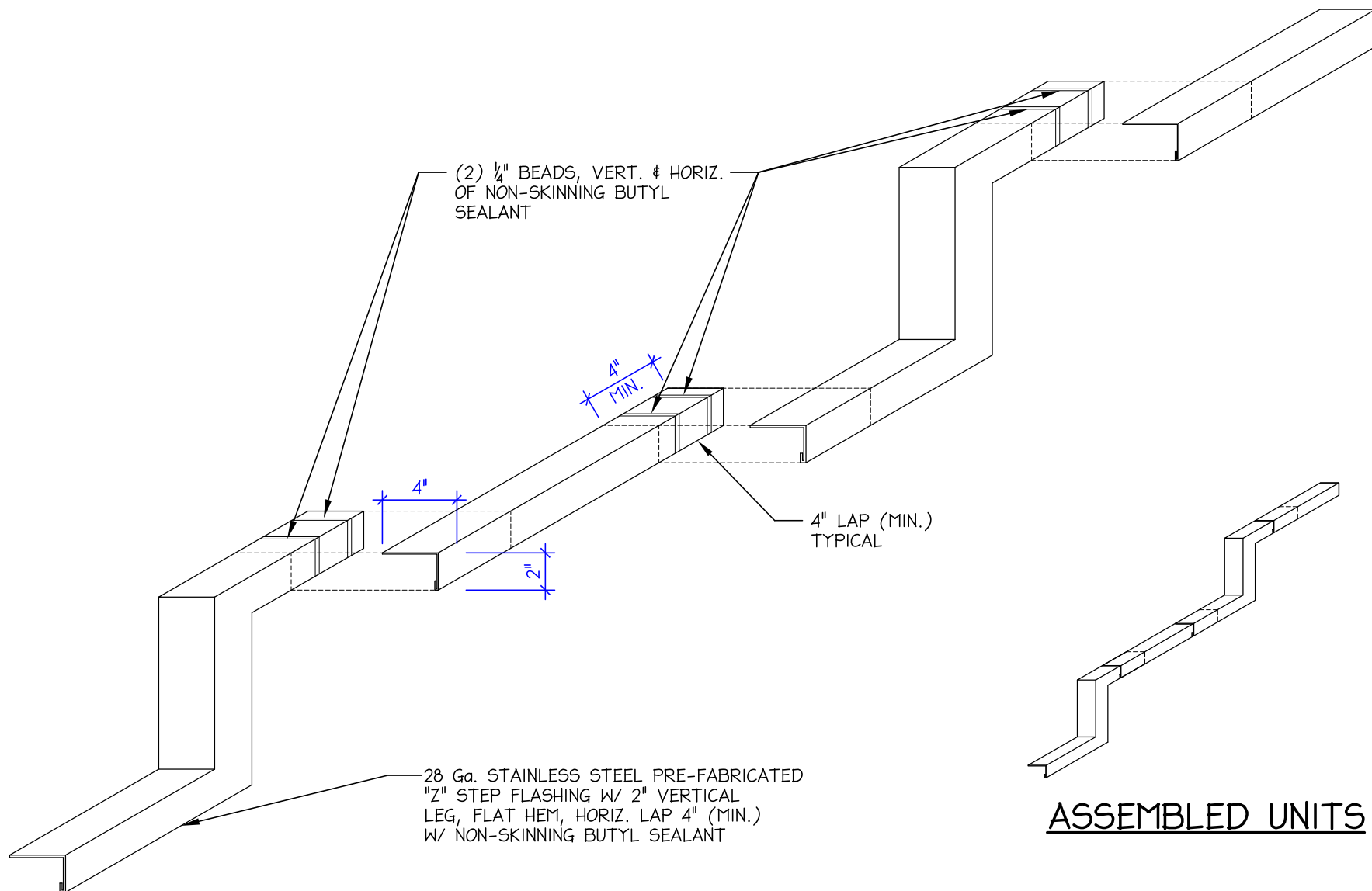
- 1) "STEEP SLOPE" ROOFS ARE DEFINED AS ROOFS WITH A SLOPE OF 3:12 (14°) OR GREATER.
- 2) THE PRE-FABRICATED "Z" STEP FLASHING (INCLUDING THE STRAIGHT PIECES) AND THE FULLY ADHERED MEMBRANE FLASHINGS SHALL BE INSTALLED IN A SHINGLE LAP FASHION (START INSTALLATION AT THE LOW POINT OF THE ROOF AND WORK TOWARDS THE HIGH POINT).

ISOMETRIC HIGH CAVITY WALL FLASHING @ STEEP SLOPE LOW ROOF (STEP-FLASHED VERSION)

DATE:
DEC. 15, 2008

DWG. NUMBER

3
2



4
2

ISOMETRIC - MASONRY "Z" STEP FLASHING

SCALE: $1\frac{1}{2}$ "=1'-0"

(STEP-FLASHED VERSION)

REVISED: 12-15-2008

NOTE:

- 1) THE PRE-FABRICATED "Z" STEP FLASHINGS SHALL BE INSTALLED IN A SHINGLE LAP FASHION (START INSTALLATION AT THE LOW POINT OF THE ROOF AND WORK TOWARDS THE HIGH POINT).
- 2) ALL EXPOSED VERTICAL AND HORIZONTAL EDGES TO BE HEMMED.