

NOTE: SEE "ENLARGED DETAIL OF FLASHINGS AND MEMBRANES"

LADDER TYPE HORIZONTAL  
JOINT REINFORCEMENT @ 16"  
O.C. (UNLESS NOTED OTHER-  
WISE) W/ ADJUSTABLE TIES

PEASTONE OR MESH  
DRAINAGE

24" SPACING ON  
JOINT REINFORCEMENT  
AT THIS LOCATION ONLY

GROUT COLLAR SOLID

2" RIGID INSULATION

8" CMU

4" CMU (SMOOTH  
FACE UNITS, 100%  
SOLID)

16" CMU

1/4" x 1/8" TERMINATION BAR  
W/ 1/4" DIA. x 1/4" EXPANSION  
PINS @ 16" O.C. (MIN.)

FULLY ADHERED MEMBRANE  
FLASHING

FULLY ADHERED SECONDARY  
MEMBRANE FLASHING

4" DECORATIVE CMU W/  
JOINT REINFORCEMENT @ 16" O.C.

WEEPS W/ DIVERTERS @ 32" O.C. (MAX.)

28 Ga. STAINLESS STEEL FLASHING  
W/ 2" VERTICAL LEG, HEMMED  
NO DRIP, HORIZONTAL LAP 4" (MIN.) W/  
NON-SKINNING BUTYL SEALANT  
(BY MASON CONTRACTOR)

UNITS ABOVE AND BELOW FLASHING  
TO BE CUT AS REQ'D SO METAL  
MASONRY FLASHING IS PARALLEL  
TO ROOF.

METAL RAKE  
(BY ROOFING CONTRACTOR)

STANDING SEAM  
METAL ROOF

# 

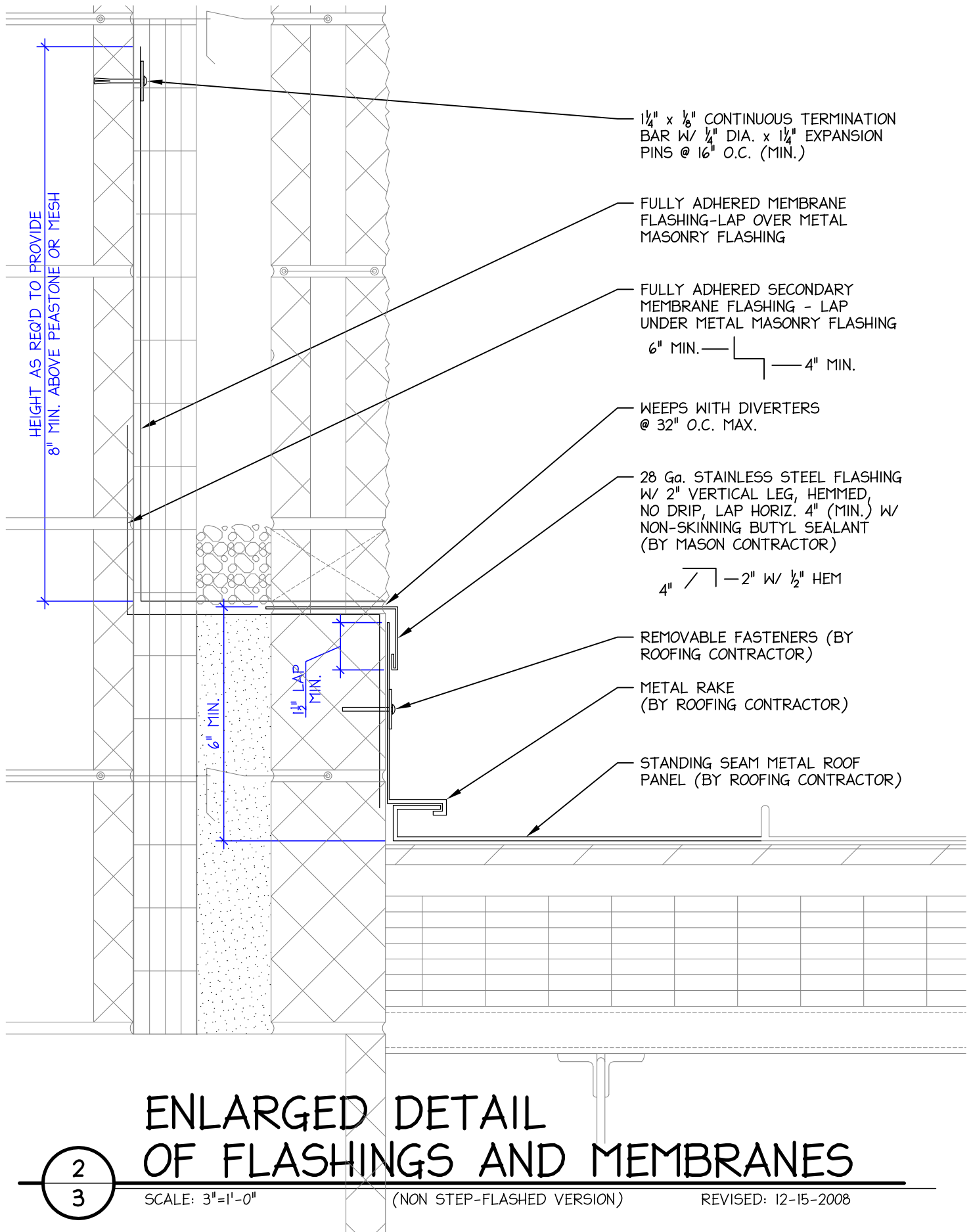
SCALE: 1"=1'-0"

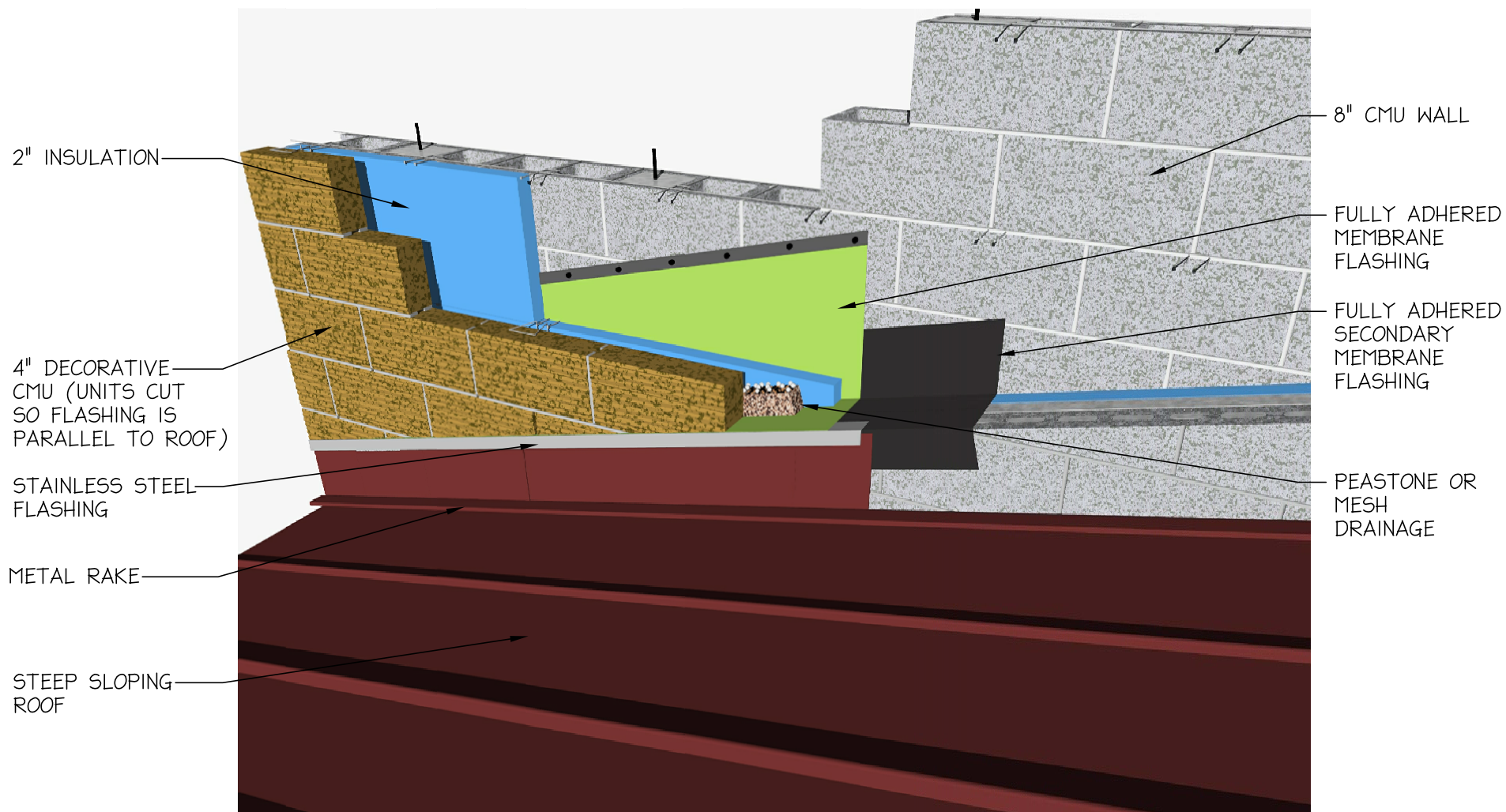
(NON STEP-FLASHED VERSION)

REVISED: 12-15-2008

### NOTES:

- 1) "STEEP SLOPE" ROOFS ARE DEFINED AS ROOFS WITH A SLOPE BETWEEN 3:12 (14°) AND 7:12 (30.5°)
- 2) THIS DETAIL IS APPLICABLE TO ROOFS WITH A SLOPE BETWEEN 3:12 (14°) AND 7:12 (30.5°) FOR STEEPER SLOPES, SLIDING VENEER SHALL BE EVALUATED AND THE NEED FOR STOPS CONSIDERED. CONSULT AN ENGINEER.





**NOTES:**

- 1) "STEEP SLOPE" ROOFS ARE DEFINED AS ROOFS WITH A SLOPE BETWEEN 3:12 (14°) AND 7:12 (30.5°).
- 2) THE STAINLESS STEEL MASONRY FLASHING AND THE FULLY ADHERED MEMBRANE FLASHINGS SHALL BE INSTALLED IN A SHINGLE LAP FASHION (START INSTALLATION AT THE LOW POINT OF THE ROOF, AND WORK TOWARDS THE HIGH POINT).

**ISOMETRIC - HIGH CAVITY WALL FLASHING @ STEEP SLOPE LOW ROOF**  
(NON STEP-FLASHED VERSION)

**DATE:**  
DEC. 15, 2008

**DWG. NUMBER**

3  
3