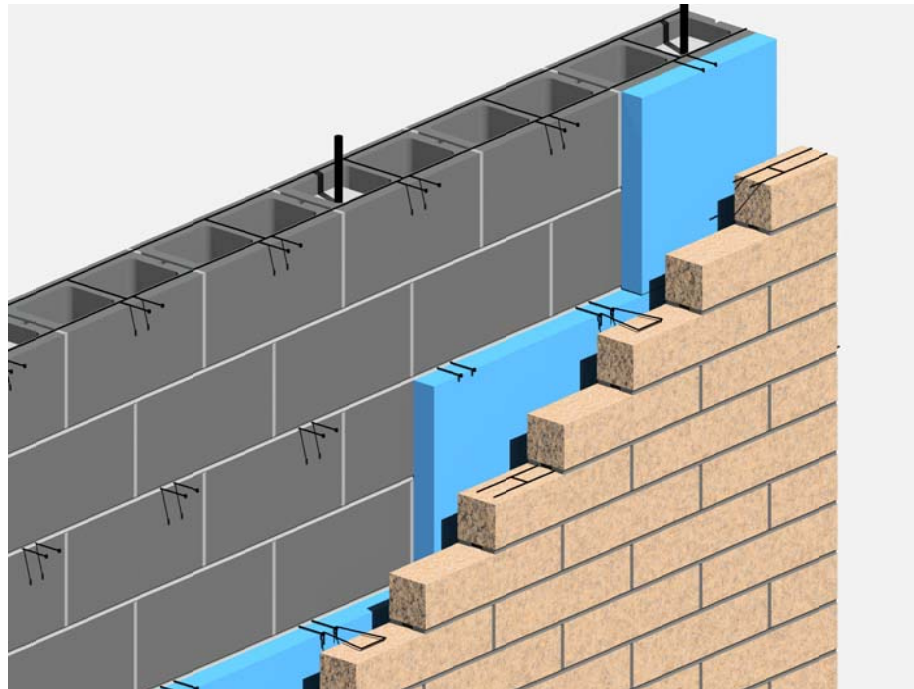


NOTE:
FOR ADDITIONAL INFORMATION/DETAILS REGARDING
CAVITY WALLS, SEE THE "MULTI WYTHE" AND "HIGH R"
DETAIL SETS.



ISOMETRIC VIEW

1
A-1

4" HIGH CMU
VENEER IN RUNNING BOND

LADDER TYPE HORIZONTAL
JOINT REINF. @ 16" O.C. W/
ADJUSTABLE VENEER TIES

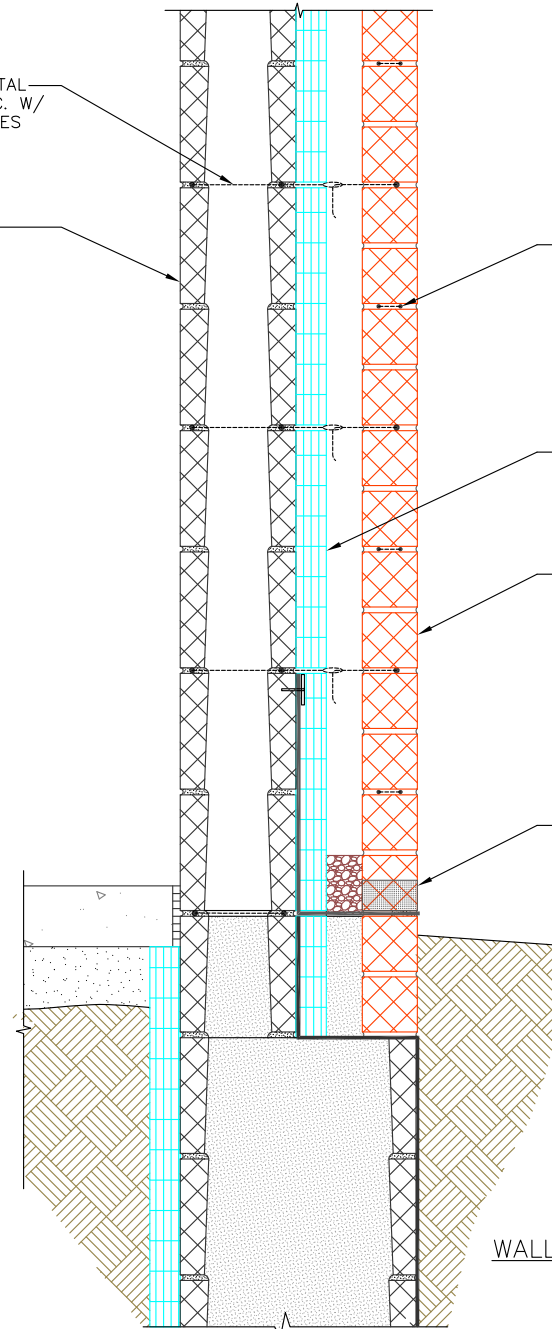
CMU BACK-UP

LADDER TYPE HORIZONTAL
JOINT REINF. @ 16" O.C.

RIGID INSULATION

4" HIGH SOLID CMU VENEER
(HALF HIGH UNITS)
IN RUNNING BOND

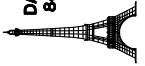
WEEPS & FLASHING
SYSTEM



WALL SECTION

DAILEY ENGINEERING, INC.
8485 STEPHENSON ROAD
ONSTED, MI 48865

PH. # (517) 467-9000
FAX # (517) 467-9010

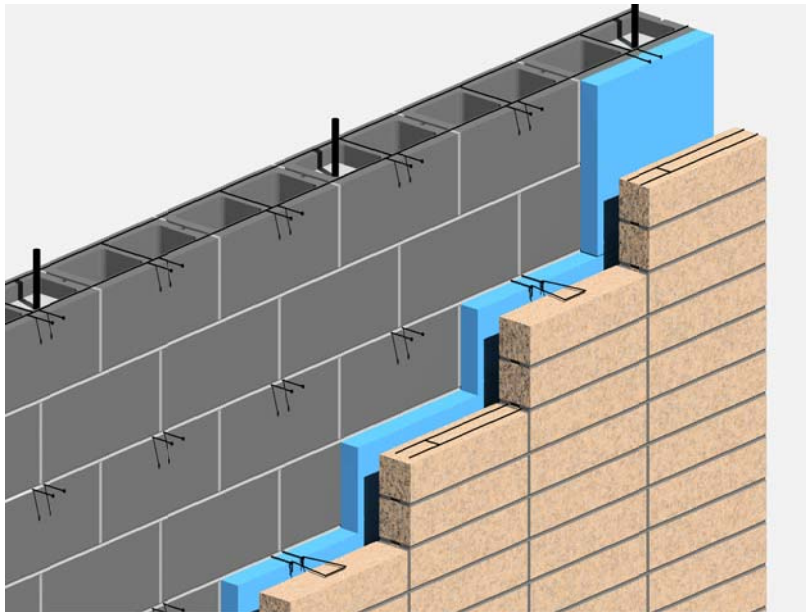


the Masonry Institute of Michigan, Inc.

GENERIC WALL DESIGN - 4" HIGH CMU VENEER IN RUNNING BOND

IN CHARGE:	
DRAWN:	M.W.F.
APPROVED:	
DATE:	05/03/2011
TITLE:	CMU VENEER
SHEET:	A-1

NOTE:
FOR ADDITIONAL INFORMATION/DETAILS REGARDING
CAVITY WALLS, SEE THE "MULTI WYTHE" AND "HIGH R"
DETAIL SETS.



ISOMETRIC VIEW

1
A-2

4" HIGH CMU
VENEER IN STACKED BOND

LADDER TYPE HORIZONTAL
JOINT REINF. @ 16" O.C. W/
ADJUSTABLE VENEER TIES

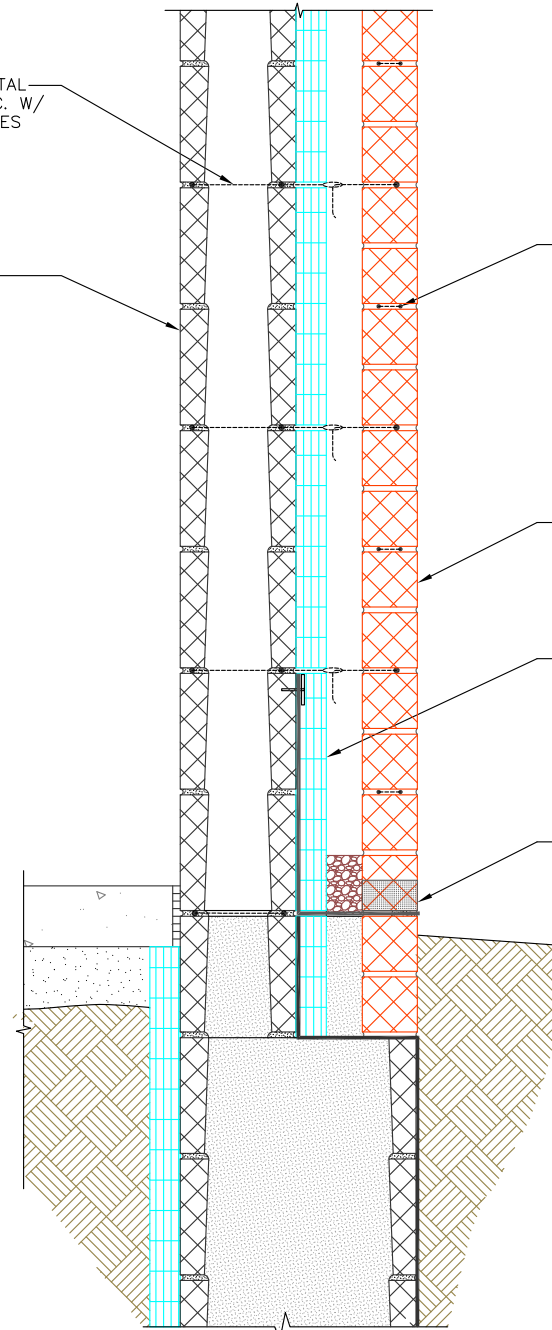
CMU BACK-UP

LADDER TYPE HORIZONTAL
JOINT REINF. @ 16" O.C.

4" HIGH SOLID CMU VENEER
(HALF HIGH UNITS)
IN STACKED BOND

RIGID INSULATION

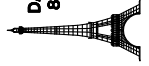
WEEPS & FLASHING
SYSTEM



WALL SECTION

DAILEY ENGINEERING, INC.
8485 STEPHENSON ROAD
ONSTED, MI 48865

PH. # (517) 467-9000
FAX # (517) 467-9010

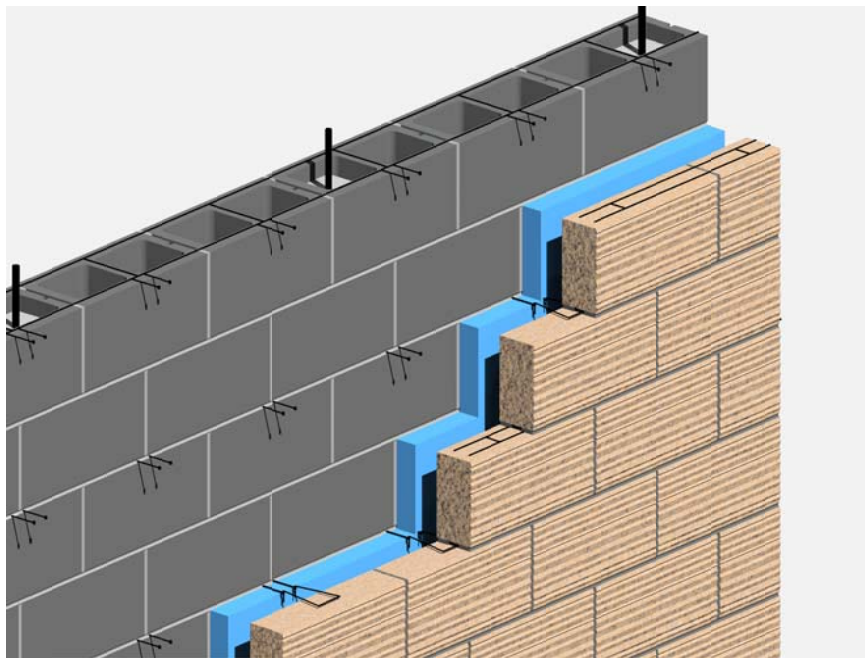


the Masonry Institute of Michigan, Inc.

GENERIC WALL DESIGN - 4" HIGH CMU VENEER IN STACKED BOND

IN CHARGE:	
DRAWN:	M.W.F.
APPROVED:	
DATE:	05/03/2011
TITLE:	CMU VENEER
SHEET:	A-2

NOTE:
FOR ADDITIONAL INFORMATION/DETAILS REGARDING
CAVITY WALLS, SEE THE "MULTI WYTHE" AND "HIGH R"
DETAIL SETS.



ISOMETRIC VIEW

1
A-3

8" HIGH CMU
VENEER IN RUNNING BOND

LADDER TYPE HORIZONTAL
JOINT REINF. @ 16" O.C. W/
ADJUSTABLE VENEER TIES

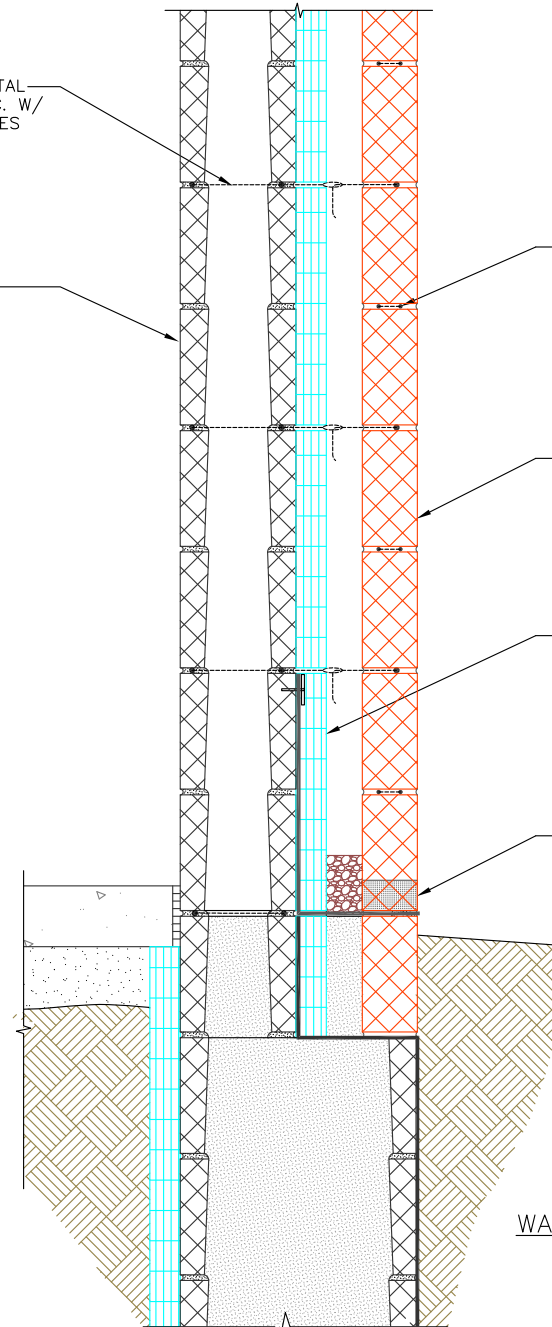
CMU BACK-UP

LADDER TYPE HORIZONTAL
JOINT REINF. @ 16" O.C.

8" HIGH SOLID CMU VENEER
(STANDARD SIZE UNITS)
IN RUNNING BOND

RIGID INSULATION

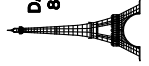
WEEPS & FLASHING
SYSTEM



WALL SECTION

DAILEY ENGINEERING, INC.
8485 STEPHENSON ROAD
ONSTED, MI 48865

PH. # (517) 467-9000
FAX # (517) 467-9010

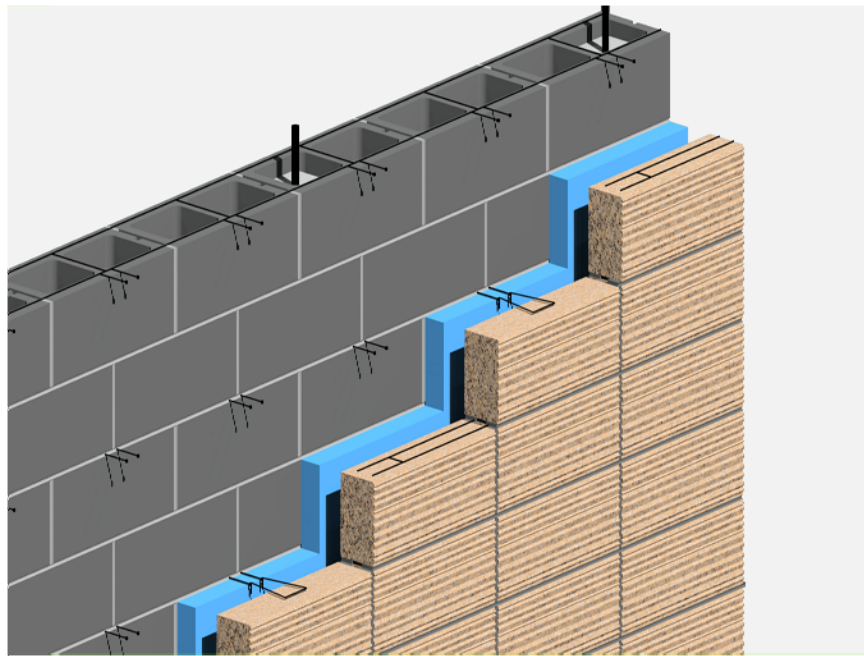


the Masonry Institute of Michigan, Inc.

GENERIC WALL DESIGN - 8" HIGH CMU VENEER IN RUNNING BOND

IN CHARGE:	
DRAWN:	M.W.F.
APPROVED:	
DATE:	05/03/2011
TITLE:	CMU VENEER
SHEET:	A-3

NOTE:
FOR ADDITIONAL INFORMATION/DETAILS REGARDING
CAVITY WALLS, SEE THE "MULTI WYTHE" AND "HIGH R"
DETAIL SETS.



ISOMETRIC VIEW

1
A-4

8" HIGH CMU
VENEER IN STACKED BOND

LADDER TYPE HORIZONTAL
JOINT REINF. @ 16" O.C. W/
ADJUSTABLE VENEER TIES

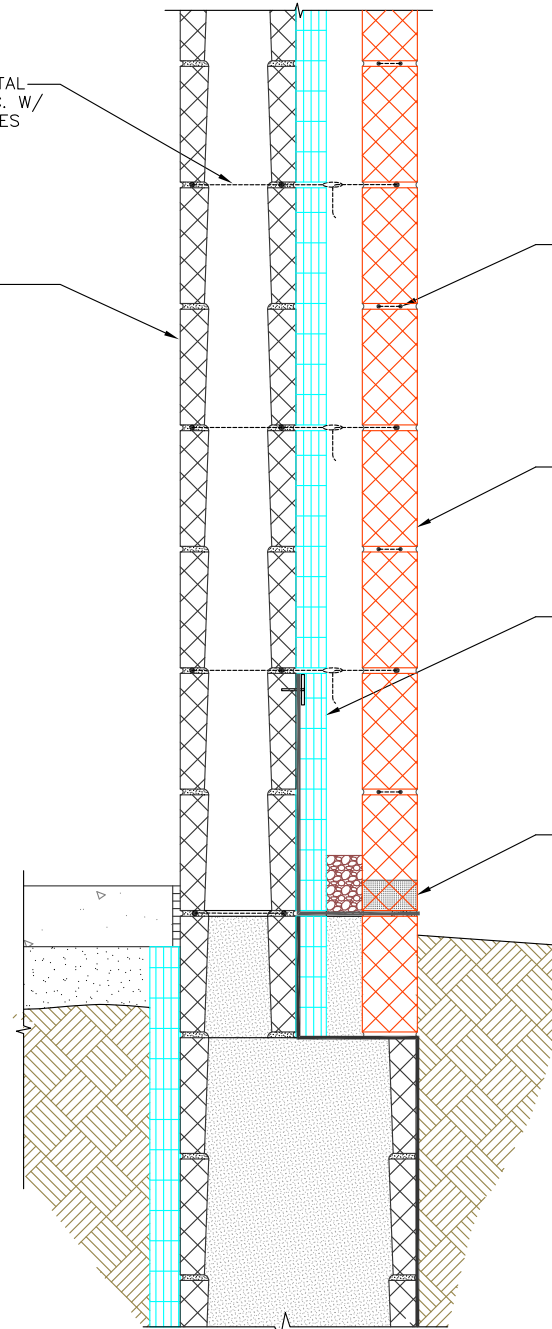
CMU BACK-UP

LADDER TYPE HORIZONTAL
JOINT REINF. @ 16" O.C.

8" HIGH SOLID CMU VENEER
(STANDARD SIZE UNITS)
IN STACKED BOND

RIGID INSULATION

WEEPS & FLASHING
SYSTEM



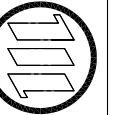
WALL SECTION

DAILEY ENGINEERING, INC.
8485 STEPHENSON ROAD
ONSTED, MI 48865



PH. # (517) 467-9000
FAX # (517) 467-9010

the Masonry Institute of Michigan, Inc.



GENERIC WALL DESIGN - 8" HIGH CMU VENEER IN STACKED BOND

IN CHARGE:

DRAWN: M.W.F.

APPROVED:

DATE: 05/03/2011

TITLE:

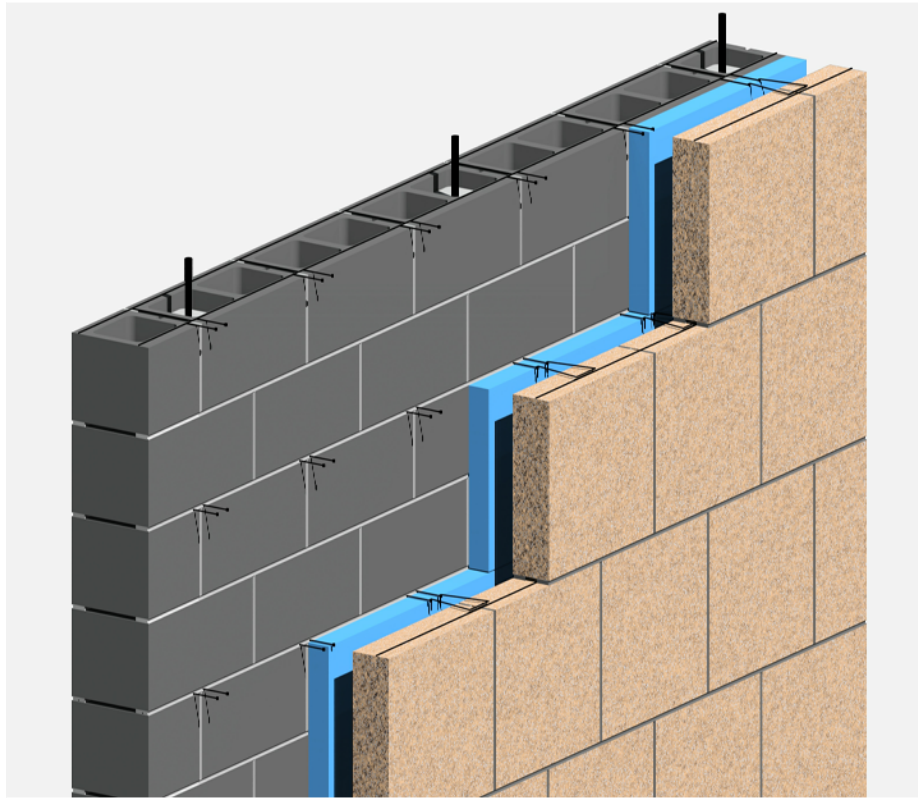
CMU VENEER

SHEET:

A-4

NOTES:

- 1) FOR ADDITIONAL INFORMATION/DETAILS REGARDING CAVITY WALLS, SEE THE "MULTI WYTHE" AND "HIGH R" DETAIL SETS.
- 2) CONTROL JOINT SPACING SHALL BE EVALUATED CAREFULLY, AS THE JOINT REINFORCEMENT ON 16" HIGH VENEER UNITS IS LIMITED TO THE SINGLE STRAND WIRE.



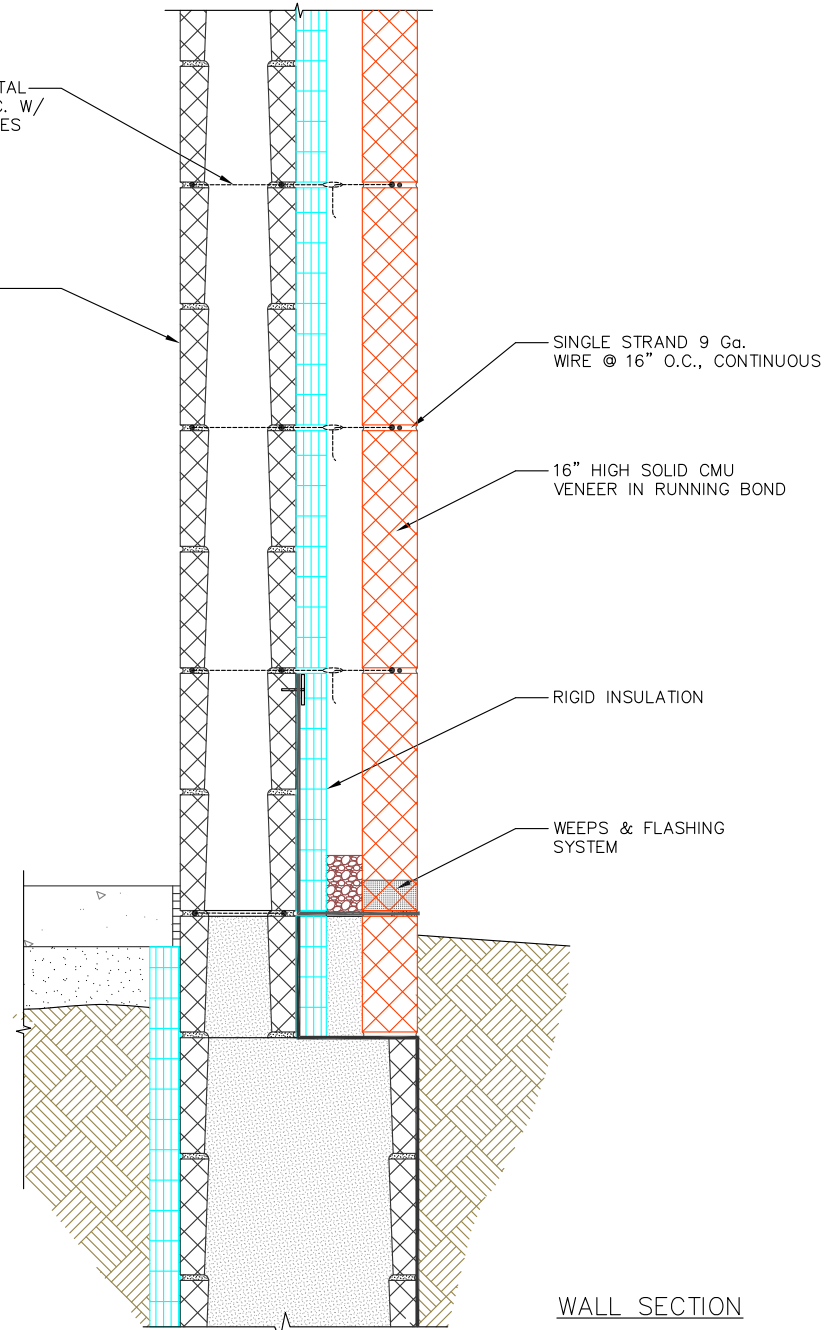
ISOMETRIC VIEW

1
A-5

16" HIGH CMU
VENEER IN RUNNING BOND

LADDER TYPE HORIZONTAL
JOINT REINF. @ 16" O.C. W/
ADJUSTABLE VENEER TIES

CMU BACK-UP



SINGLE STRAND 9 Ga.
WIRE @ 16" O.C., CONTINUOUS

16" HIGH SOLID CMU
VENEER IN RUNNING BOND

RIGID INSULATION

WEEPS & FLASHING
SYSTEM

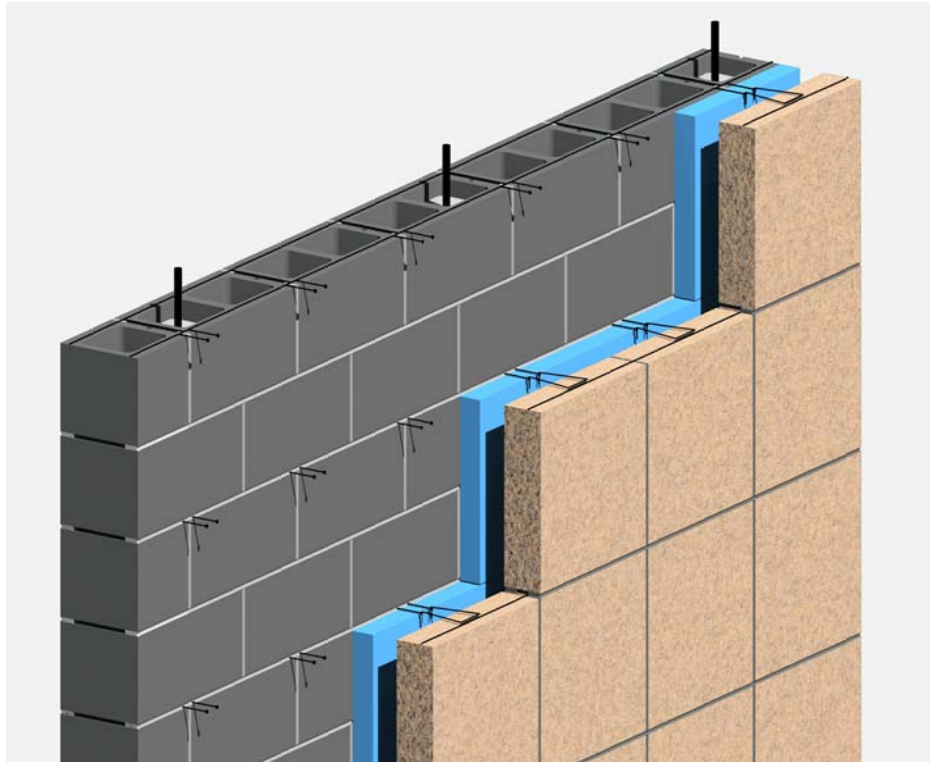
WALL SECTION



IN CHARGE:	
DRAWN:	M.W.F.
APPROVED:	
DATE:	05/03/2011
TITLE:	CMU VENEER
SHEET:	A-5

NOTES:

- 1) FOR ADDITIONAL INFORMATION/DETAILS REGARDING CAVITY WALLS, SEE THE "MULTI WYTHE" AND "HIGH R" DETAIL SETS.
- 2) CONTROL JOINT SPACING SHALL BE EVALUATED CAREFULLY, AS THE JOINT REINFORCEMENT ON 16" HIGH VENEER UNITS IS LIMITED TO THE SINGLE STRAND WIRE.



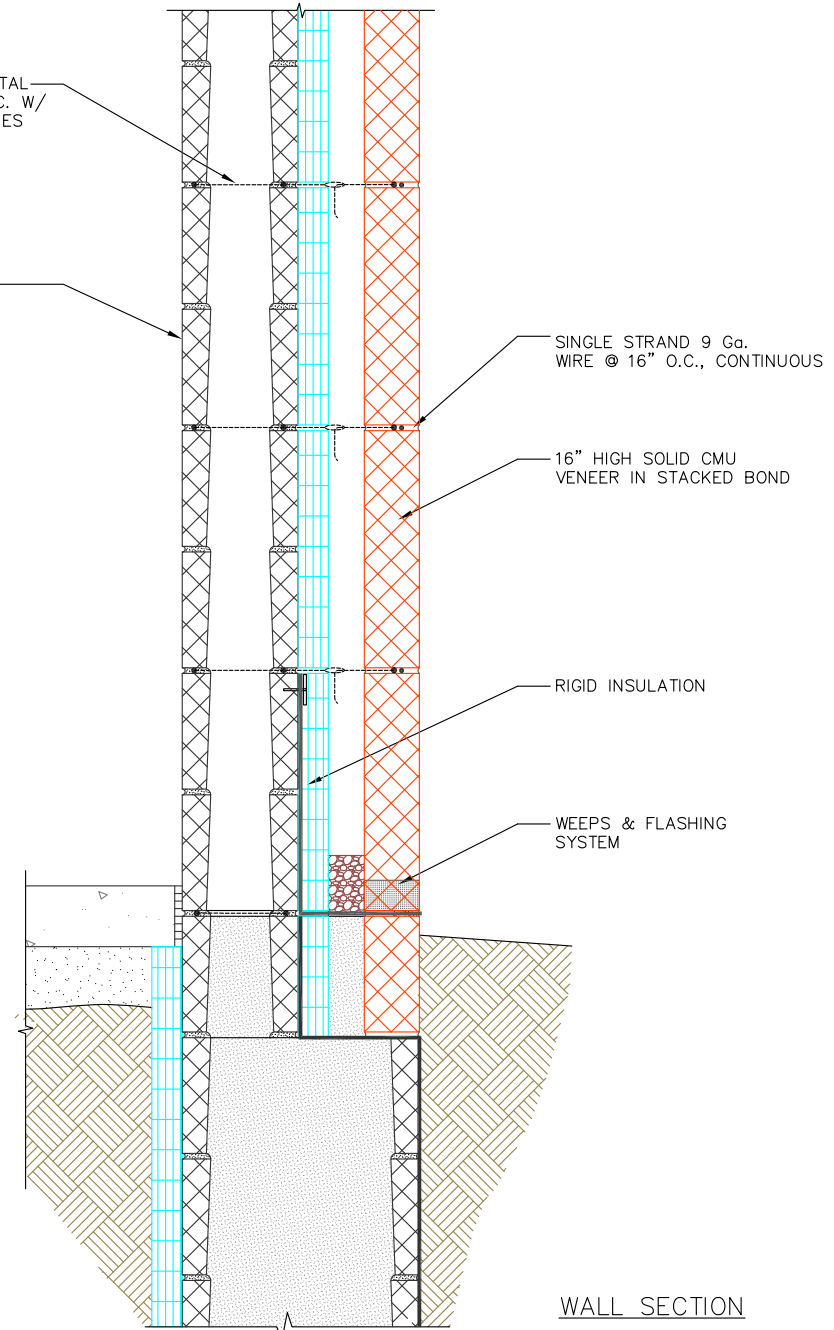
ISOMETRIC VIEW

1
A-6

16" HIGH CMU
VENEER IN STACKED BOND

LADDER TYPE HORIZONTAL
JOINT REINF. @ 16" O.C. W/
ADJUSTABLE VENEER TIES

CMU BACK-UP



SINGLE STRAND 9 Ga.
WIRE @ 16" O.C., CONTINUOUS

16" HIGH SOLID CMU
VENEER IN STACKED BOND

RIGID INSULATION

WEEPS & FLASHING
SYSTEM

WALL SECTION



IN CHARGE:	
DRAWN:	M.W.F.
APPROVED:	
DATE:	05/03/2011
TITLE:	CMU VENEER
SHEET:	A-6