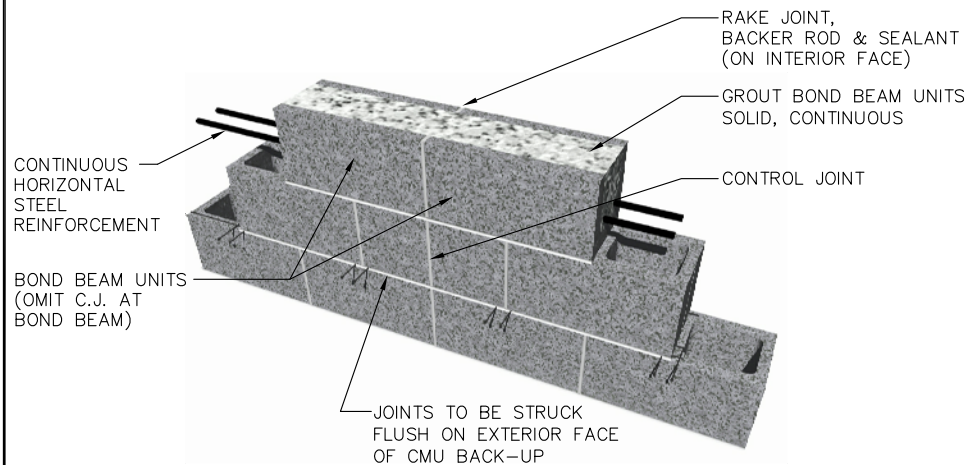
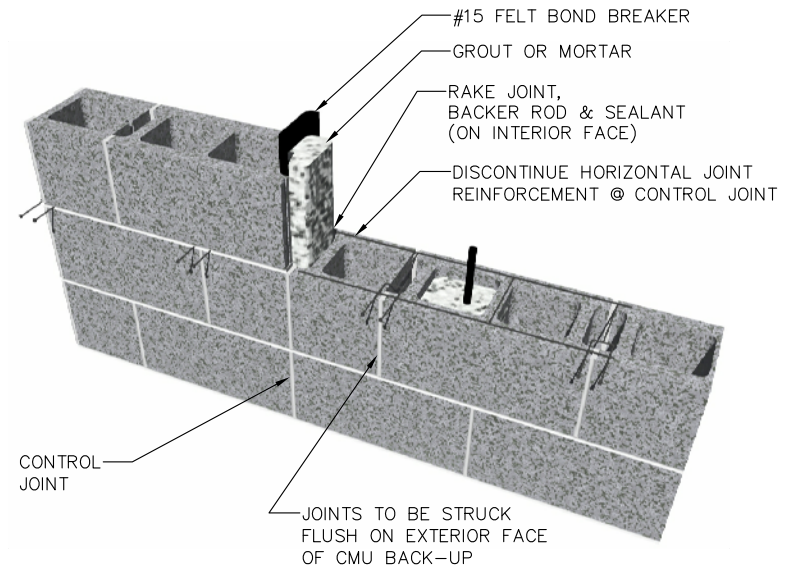


NOTE:  
THERE IS USUALLY NO NEED  
FOR BRICK EXPANSION JOINTS  
TO ALIGN DIRECTLY WITH CONTROL  
JOINT LOCATIONS IN THE CMU  
BACKUP.

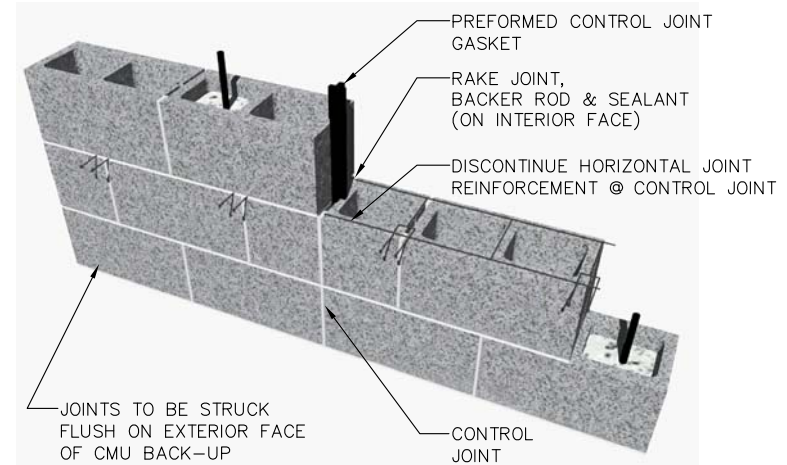
8D  
A-1  
BRICK EXPANSION JOINT (EJ)



8C  
A-1  
MASONRY CONTROL JOINT @  
CONTINUOUS BOND BEAM DETAIL  
(PER STRUCTURAL REQUIREMENTS)



8A  
A-1  
CMU BACK-UP CONTROL  
JOINT - MICHIGAN DETAIL



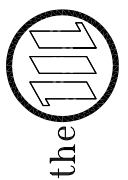
8B  
A-1  
CMU BACK-UP CONTROL  
JOINT - ALTERNATE DETAIL

DAILEY ENGINEERING, INC.  
8495 STEPHENSON ROAD  
ONSTED, MI 49265

PH. # (517) 467-9000  
FAX # (517) 467-9010

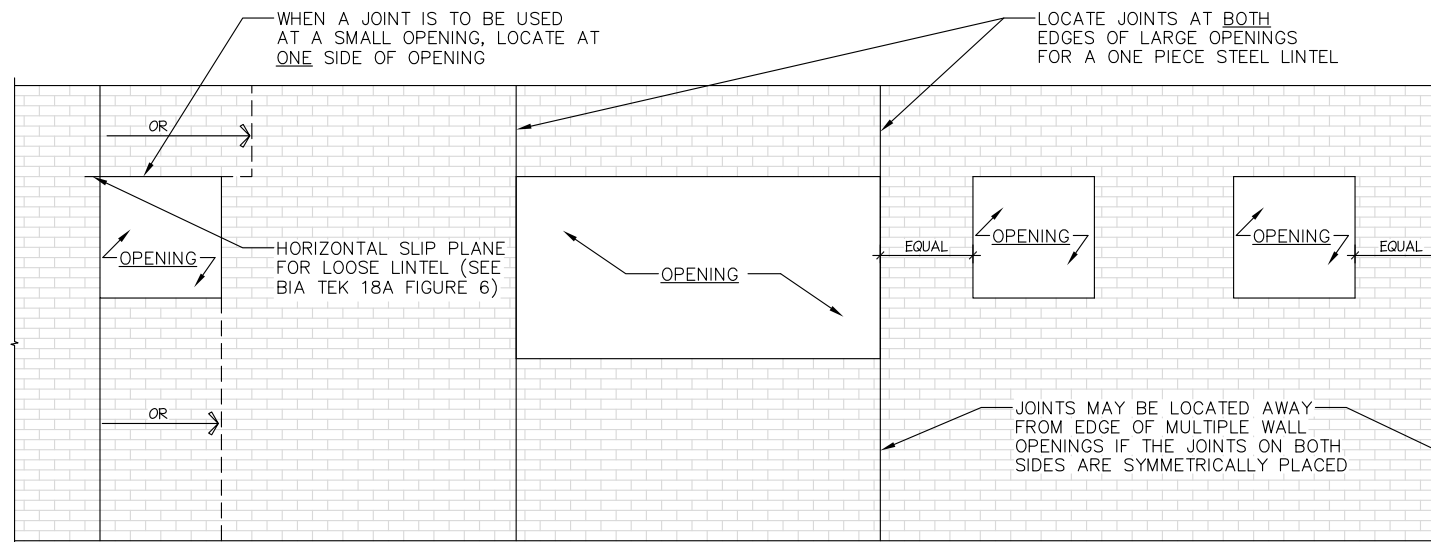


the Masonry Institute of Michigan, Inc.



GENERIC WALL DESIGN - MULTI WYTHE (8" CMU W/ BRICK VENEER)

IN CHARGE:	
DRAWN:	M.W.F.
APPROVED:	
DATE:	05/03/2011
TITLE:	CONTROL/EXPANSION JOINT DETAILS
SHEET:	A-9

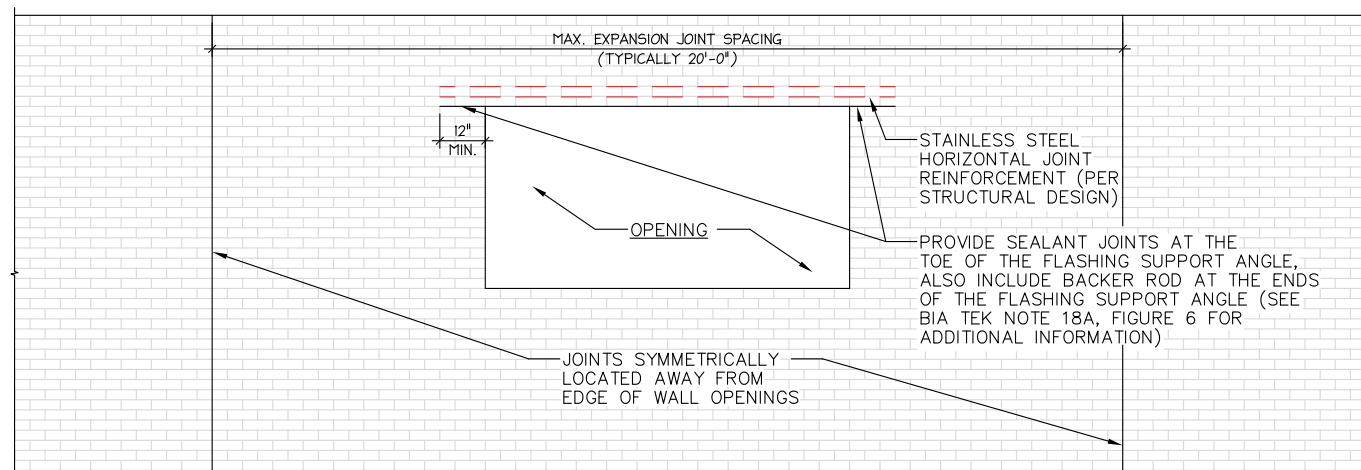


NOTE:  
SEE BIA TEK NOTE 18A AND  
"BRICK EXPANSION JOINTS AND  
WALL OPENINGS" (BY J. GREGG  
BORCHELT, PE) (PUBLISHED IN  
"THE STORY POLE" JULY/AUG.  
2007 VOL. 38 NO. 4) FOR  
ADDITIONAL GUIDANCE ON  
LOCATING EXPANSION JOINTS.

9A  
A-10

## BRICK EXPANSION JOINTS— PLACEMENT LOCATION

ELEVATION VIEW



NOTE:  
TYPICALLY EXPANSION JOINTS HAVE  
BEEN LOCATED AT OR VERY CLOSE  
TO THE SIDES OF OPENINGS.  
HOWEVER IT IS PREFERRED FOR  
EXPANSION JOINTS TO BE LOCATED  
AWAY FROM THE EDGES OF THE  
OPENINGS AND TO ADD  
REINFORCEMENT ABOVE THE  
OPENINGS TO FUNCTION AS THE  
STRUCTURAL LINTEL. DETAIL 9B  
ILLUSTRATES THE APPLICATION OF  
THIS APPROACH.

9B  
A-10

## BRICK EXPANSION JOINTS—PLACEMENT LOCATIONS WITH "REINFORCED BRICK LINTEL OPENINGS" (PREFERRED)

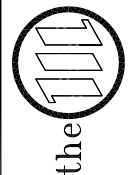
ELEVATION VIEW

**DALLEY ENGINEERING, INC.**  
8486 STEPHENSON ROAD  
ONSTED, MI 48865

PH. # (517) 467-9000  
FAX # (517) 467-9010



**the Masonry Institute of Michigan, Inc.**



GENERIC WALL DESIGN - MULTI WYTHE (8" CMU W/ BRICK VENEER)

IN CHARGE:

DRAWN: M.W.F.

APPROVED:

DATE: 05/03/2011

TITLE:

BRICK EXPANSION  
JOINT LOCATION DETAILS

SHEET:

A-10