

**GENERIC BUILDING**  
NOT TO SCALE

#### NOTES

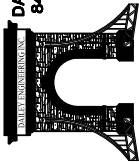
- 1) THIS SET OF DETAILS WILL RESULT IN A MASONRY WALL ASSEMBLY WITH A CALCULATED (STEADY STATE) THERMAL VALUE OF APPROXIMATELY R-13. THE LARGE THERMAL MASS (TRANSIENT COMPONENT) TYPICAL OF MASONRY CONSTRUCTION WILL PROVIDE A HIGHER EFFECTIVE R-VALUE THAN THE CALCULATED VALUE.
- 2) THIS SET OF DETAILS CALLS FOR NOMINAL 2" RIGID INSULATION WITH A MINIMUM R OF 10, WHICH WILL SATISFY THE 2009 IECC (WHICH ADOPTS THE ASHRAE 90.1-2007 BY REFERENCE) "ASSEMBLY MAXIMUM U-VALUE" PRESCRIPTIVE REQUIREMENTS FOR ALL CLIMATE ZONES UP TO AND INCLUDING ZONE 6 (MICHIGAN RANGES FROM ZONE 5 IN THE SOUTH TO ZONE 7 IN THE NORTH). IN ORDER TO USE THE PRESCRIPTIVE PROVISIONS OF THE REFERENCED ENERGY CODE, WALL OPENINGS ARE LIMITED TO A MAXIMUM 40% OF GROSS WALL AREA, AND SKYLIGHTS ARE LIMITED TO A MAXIMUM 5% OF THE GROSS ROOF AREA.
- 3) A NOMINAL WALL ASSEMBLY THICKNESS OF 1'-4" IS SHOWN FOR MODULARITY, BUT THE DETAILS CAN BE MODIFIED TO ACCOMMODATE USER DESIRED VARIATIONS IN OVERALL WALL THICKNESS AS WELL AS VARIATIONS IN INSULATION AND AIR SPACE THICKNESS (A 1" MINIMUM AIR SPACE IS MANDATED BY CODE).
- 4) THIS SET OF DETAILS WILL RESULT IN A WALL WITH THREE CONTROL LAYERS: MOISTURE, THERMAL, AND AIR. (SEE SHEET A-12 FOR ADDITIONAL INFORMATION).

#### INDEX - 2" HIGH PERFORMANCE CAVITY WALL (8" CMU W/ BRICK VENEER)

- |     |        |   |
|-----|--------|---|
| 1)  | A-1    | GENERIC BUILDING ISOMETRIC  |
| 2)  | A-2    | WALL SECTION  |
| 3)  | A-3.1  | BASE DETAIL W/ VENEER BELOW GRADE                                 |
| 4)  | A-3.2  | BASE DETAIL W/ VENEER ABOVE GRADE                                 |
| 5)  | A-4.1  | SHORT SPAN MASONRY LINTEL FOR RECEPTOR STYLE WINDOWS              |
| 6)  | A-4.2  | SHORT SPAN STEEL LINTEL FOR RECEPTOR STYLE WINDOWS                |
| 7)  | A-4.3  | SHORT SPAN PRE-CAST LINTEL FOR RECEPTOR STYLE WINDOWS             |
| 8)  | A-4.4  | SHORT SPAN MASONRY LINTEL FOR STRAP STYLE WINDOWS                 |
| 9)  | A-4.5  | SHORT SPAN STEEL LINTEL FOR STRAP STYLE WINDOWS                   |
| 10) | A-4.6  | SHORT SPAN PRE-CAST LINTEL FOR STRAP STYLE WINDOWS                |
| 11) | A-5.1  | SHORT SPAN MASONRY LINTEL FOR DOOR OPENING                        |
| 12) | A-5.2  | SHORT SPAN STEEL LINTEL FOR DOOR OPENING                          |
| 13) | A-5.3  | SHORT SPAN PRE-CAST LINTEL FOR DOOR OPENING                       |
| 14) | A-6.1  | LONG SPAN MASONRY LINTEL FOR WINDOW OPENING                       |
| 15) | A-6.2  | LONG SPAN MASONRY LINTEL FOR OPENING W/ MULTIPLE PEDESTRIAN DOORS |
| 16) | A-6.3  | LONG SPAN MASONRY LINTEL FOR OVERHEAD DOOR OPENING                |
| 17) | A-7    | JAMB DETAILS & FLASHING DETAIL                                    |
| 18) | A-8.1  | STONE/PRECAST SILL FOR RECEPTOR STYLE WINDOWS                     |
| 19) | A-8.2  | STONE/PRECAST SILL FOR STRAP STYLE WINDOWS                        |
| 20) | A-9    | CONTROL/EXPANSION JOINT DETAILS                                   |
| 21) | A-10   | BRICK EXPANSION JOINT LOCATION DETAILS                            |
| 22) | A-11.1 | STONE/PRECAST COPING PARAPET DETAIL                               |
| 23) | A-11.2 | METAL COPING PARAPET DETAIL                                       |
| 24) | A-12   | ADDITIONAL "CONTROL LAYER" INFORMATION                            |
| 25) | A-13   | BRICK LEDGER FOR CMU BACK-UP DETAIL                               |
| 26) | A-14.1 | UPPER WALL / LOW ROOF FLASHING DETAIL                             |
| 27) | A-14.2 | UPPER WALL / LOW ROOF FLASHING ENLARGED DETAIL                    |

DAILEY ENGINEERING, INC.  
8485 STEPHENSON ROAD  
ONSTED, MI 49286

PH. # (517) 467-9000  
FAX # (517) 467-9010

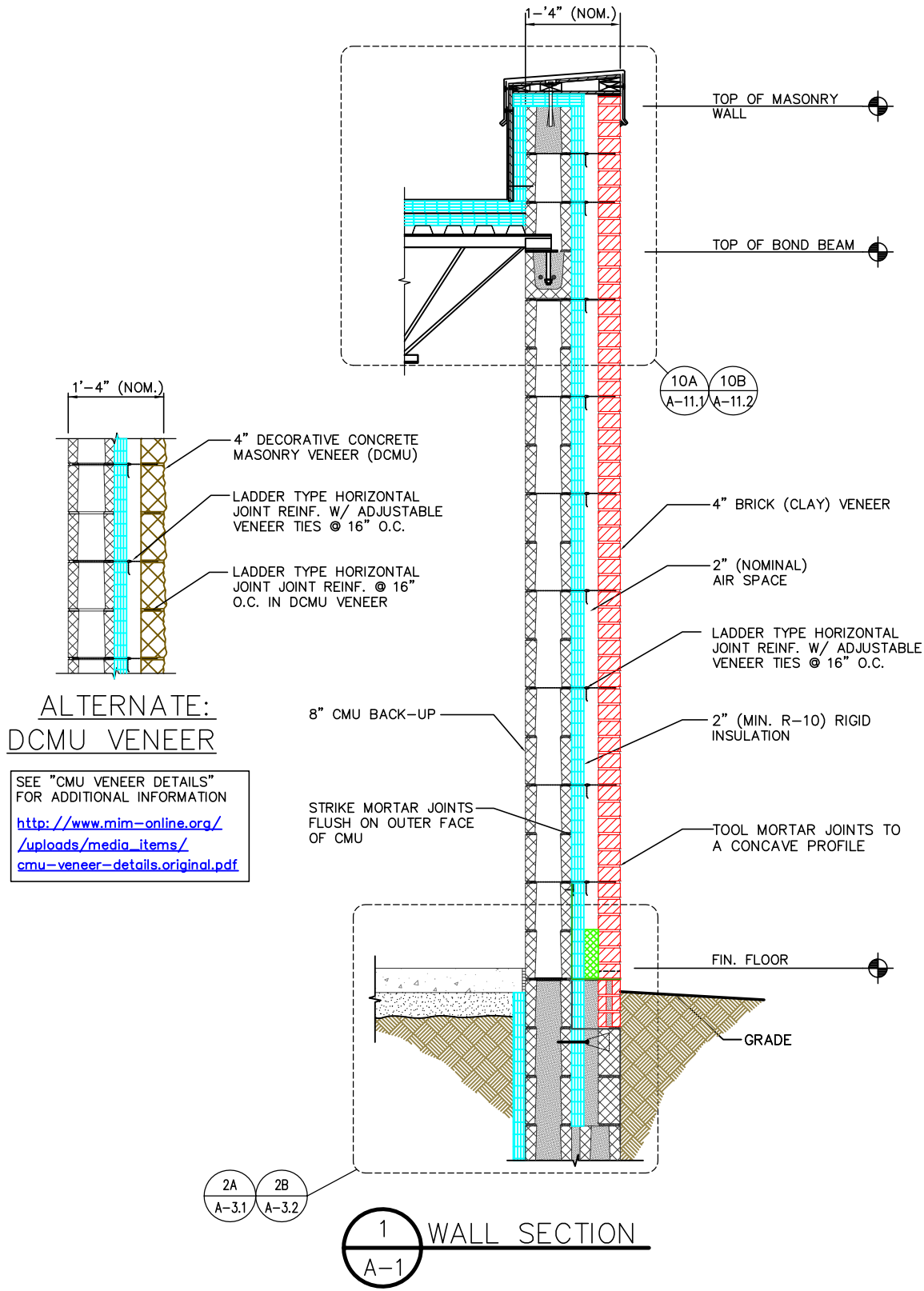


**111 MASONRY**  
Institute of Michigan

DETAIL SET MW.8.RB.2 (2" HIGH PERFORMANCE CAVITY WALL)

IN CHARGE:	MIM
DRAWN:	M.W.F.
APPROVED:	T.A.D.
DATE:	11/04/2014
TITLE:	GENERIC BUILDING ISOMETRIC
SHEET:	A-1

The decision to utilize this information is not within the purview of the MIM, and persons making use of this information do so at their own risk. MIM makes no representation or warranties, expressed or implied, with respect to the accuracy or suitability of this information. MIM and its members disclaim liability for damages of any kind, including any special, indirect, incidental, or consequential damages, which may result from the use of this information. This information is not to be interpreted as indicating compliance with, or waiver of, any provision of any applicable building code, ordinance, standard or law.



ALTERNATE:  
DCMU VENEER

SEE "CMU VENEER DETAILS"  
FOR ADDITIONAL INFORMATION  
[http://www.mim-online.org/  
uploads/media\\_items/  
cmu-veneer-details.original.pdf](http://www.mim-online.org/uploads/media_items/cmu-veneer-details.original.pdf)

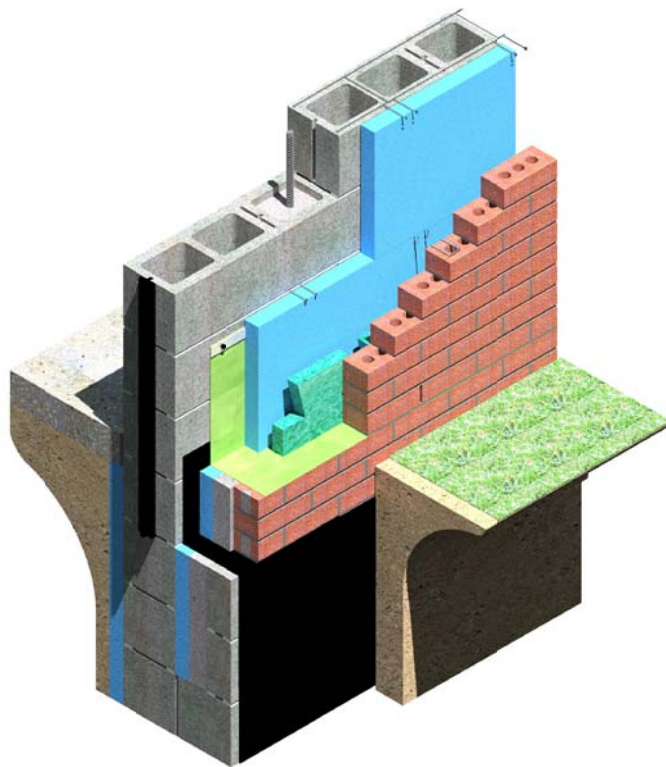
SHEET:	A-2
IN CHARGE:	MIM
DRAWN:	M.W.F.
APPROVED:	T.A.D.
DATE:	11/04/2014
TITLE:	WALL SECTION

**MASONRY**  
Institute of Michigan

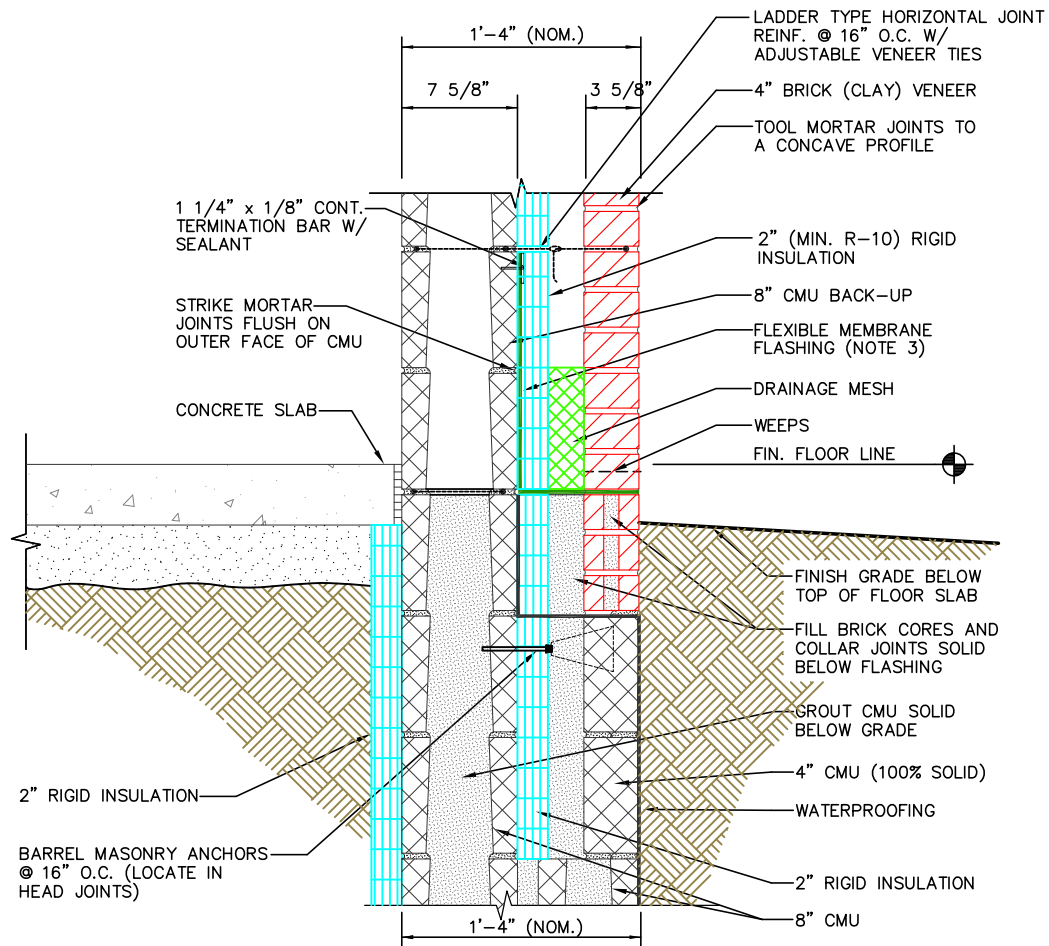
DETAIL SET MW.8.RB.2 (2" HIGH PERFORMANCE CAVITY WALL)



**DAILEY ENGINEERING, INC.**  
8485 STEPHENSON ROAD  
ONSTED, MI 48865  
PH. # (517) 467-9000  
FAX # (517) 467-9010



ISOMETRIC VIEW



SECTION VIEW

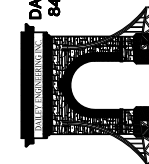
#### NOTES

- 1) CMU BELOW GRADE SHALL BE MEDIUM OR NORMAL WEIGHT.
- 2) SPECIAL CARE IN BRICK SELECTION MUST BE EXERCISED WHEN PLACING BRICK BELOW GRADE.
- 3) IF A DRIP EDGE IS NOT DESIRED, THE FLASHING MEMBRANE SHALL, MINIMALLY, EXTEND TO THE OUTBOARD SURFACE OF THE EXTERIOR WALL FINISH. IF A METAL DRIP EDGE IS DESIRED, MODIFY THIS DETAIL TO BE SIMILAR TO THE 2-PIECE FLASHING SHOWN ON DETAIL 6D SHEET A-7. EXERCISE CAUTION WHEN USING METAL DRIP EDGES AT ACCESSIBLE LOCATIONS DUE TO POSSIBLE SHARP METAL SEE: <http://www.mim-online.org/bulletins.html>

2A  
A-2

BASE DETAIL W/  
VENEER BELOW GRADE

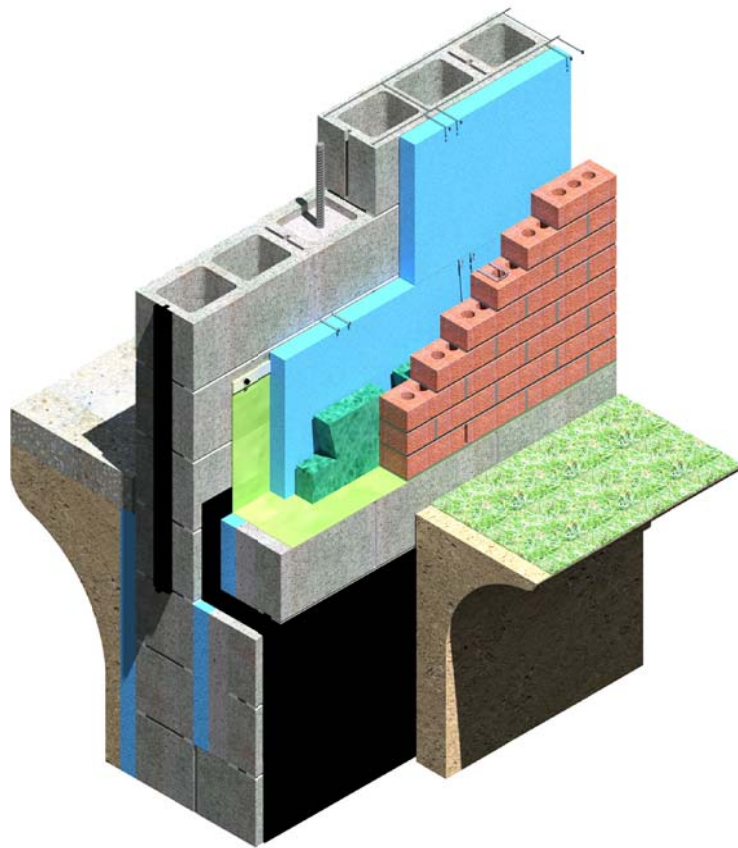
DAILEY ENGINEERING, INC.  
8485 STEPHENSON ROAD  
ONSTED, MI 49266  
PH. # (517) 467-9000  
FAX # (517) 467-9010



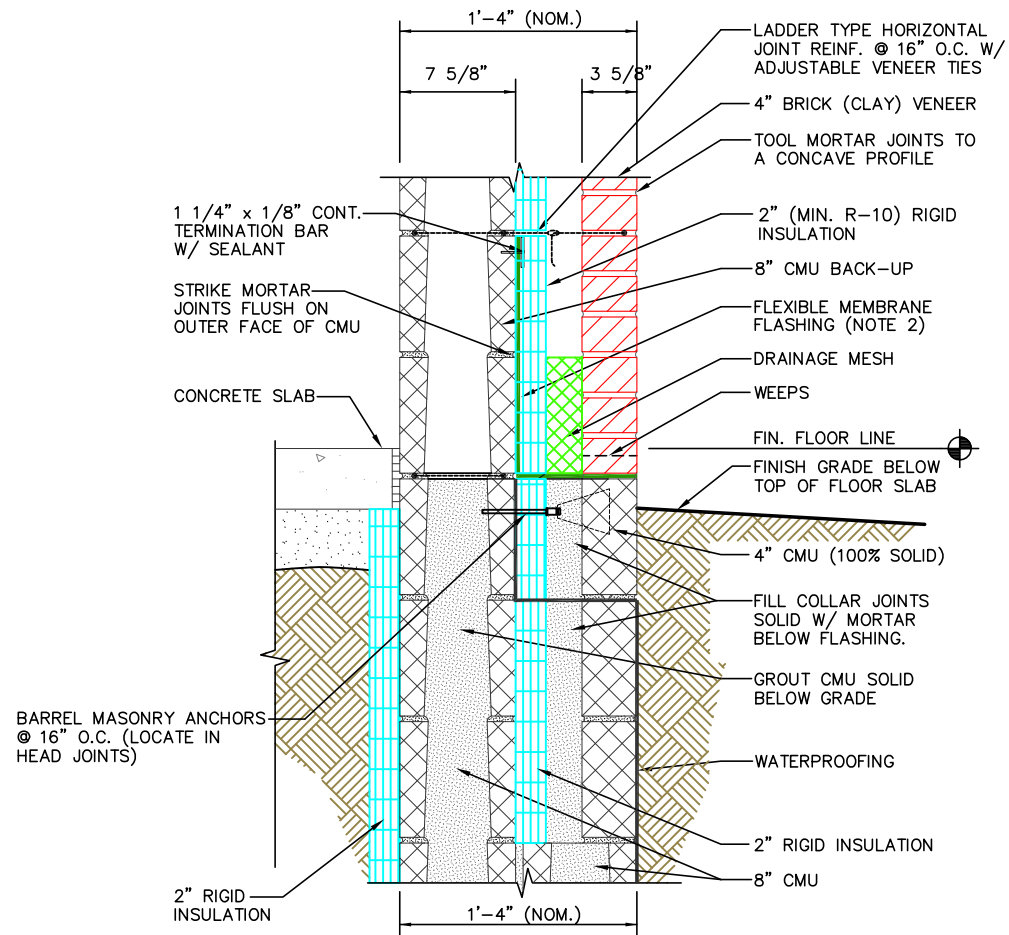
**MIM** MASONRY  
Institute of Michigan

DETAIL SET MW.8.RB.2 (2" HIGH PERFORMANCE CAVITY WALL)

IN CHARGE:	MIM
DRAWN:	M.W.F.
APPROVED:	T.A.D.
DATE:	11/04/2014
TITLE:	BASE DETAIL W/ VENEER BELOW GRADE
SHEET:	A-3.1



ISOMETRIC VIEW



SECTION VIEW

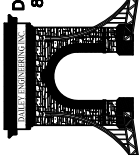
#### NOTES

- 1) CMU BELOW GRADE SHALL BE MEDIUM OR NORMAL WEIGHT.
- 2) IF A DRIP EDGE IS NOT DESIRED, THE FLASHING MEMBRANE SHALL, MINIMALLY, EXTEND TO THE OUTBOARD SURFACE OF THE EXTERIOR WALL FINISH. IF A METAL DRIP EDGE IS DESIRED, MODIFY THIS DETAIL TO BE SIMILAR TO THE 2-PIECE FLASHING SHOWN ON DETAIL 6D SHEET A-7. EXERCISE CAUTION WHEN USING METAL DRIP EDGES AT ACCESSIBLE LOCATIONS DUE TO POSSIBLE SHARP METAL SEE: <http://www.mim-online.org/bulletins.html>

2B  
A-2

BASE DETAIL W/  
VENEER ABOVE GRADE

DAILEY ENGINEERING, INC.  
8485 STEPHENSON ROAD  
ONSTED, MI 49266  
PH. # (517) 467-9000  
FAX # (517) 467-9010



**MIM**  
Institute of Michigan

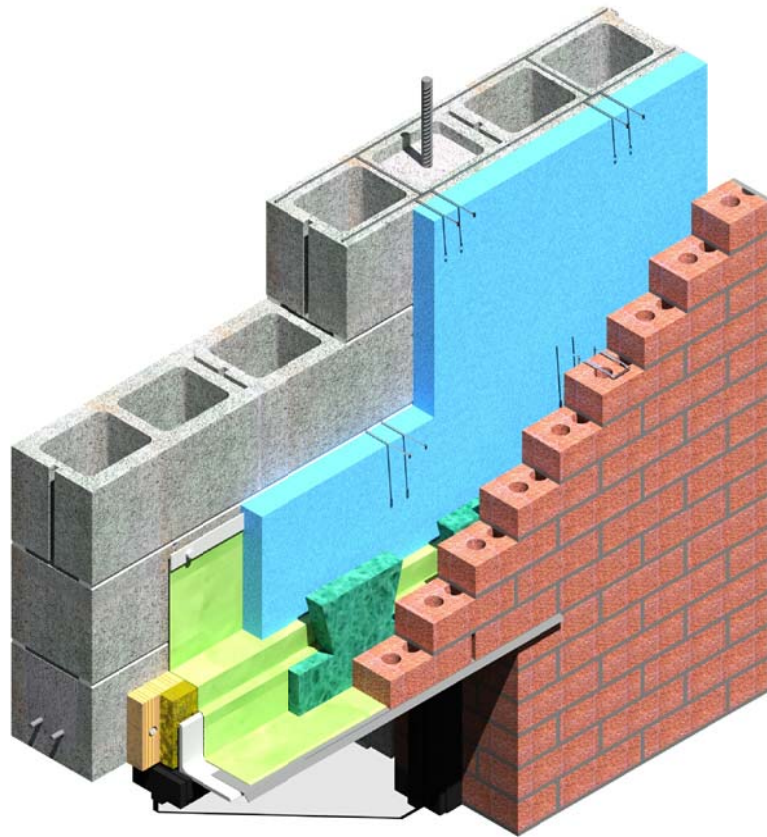
DETAIL SET MW.8.RB.2 (2" HIGH PERFORMANCE CAVITY WALL)

IN CHARGE:	MIM
DRAWN:	M.W.F.
APPROVED:	T.A.D.
DATE:	11/04/2014
TITLE:	BASE DETAIL W/ VENEER ABOVE GRADE
SHEET:	A-3.2

**NOTE:**

UNPROTECTED ALUMINUM DOOR AND WINDOW FRAMES CAN INTERACT WITH CEMENT-BASED MATERIALS AND INCUR DAMAGE. SEE PCA "MASONRY TODAY" VOLUME II, No. 1 FOR RECOMMENDATIONS.

[www.cement.org/masonry/cc\\_al\\_frames.asp](http://www.cement.org/masonry/cc_al_frames.asp)



ISOMETRIC VIEW

**NOTE:** MASONRY LINTEL MAY BE PREFABRICATED OR FIELD ASSEMBLED

LADDER TYPE HORIZONTAL JOINT REINF. @ 16" O.C. W/ ADJUSTABLE VENEER TIES

8" CMU BACK-UP

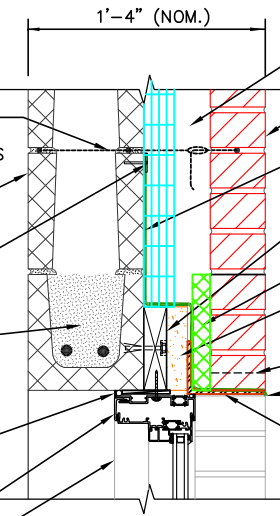
1 1/4" x 1/8" CONT. TERMINATION BAR W/ SEALANT

LINTEL UNIT (W/ REINF. PER STRUCTURAL DESIGN) GROUTED SOLID

SEALANT (BOTH SIDES) W/ BACKER ROD/ BOND BREAKER

RECEPTOR FRAMING

THERMALLY BROKEN ALUM. WINDOW FRAME



SECTION VIEW

3A  
A-1

SHORT SPAN MASONRY LINTEL FOR RECEPTOR STYLE WINDOWS

DAILEY ENGINEERING, INC.  
8485 STEPHENSON ROAD  
ONSTED, MI 49266  
PH. # (517) 467-9000  
FAX # (517) 467-9010



**111 MASONRY**  
Institute of Michigan

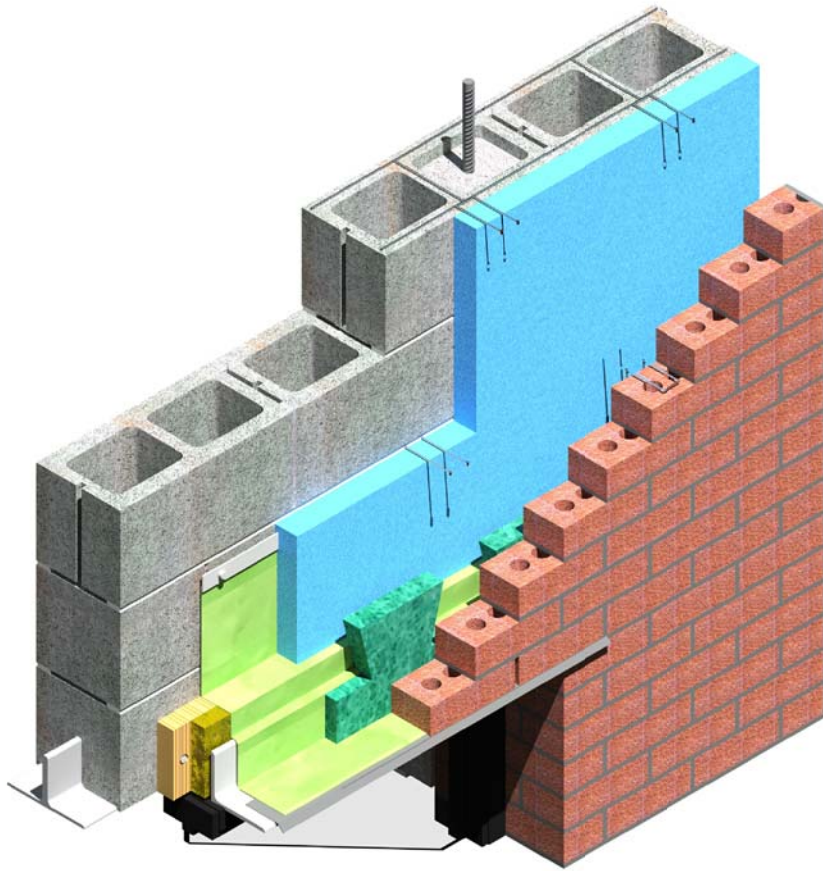
DETAIL SET MW.8.RB.2 (2" HIGH PERFORMANCE CAVITY WALL)

IN CHARGE:	MIM
DRAWN:	M.W.F.
APPROVED:	T.A.D.
DATE:	11/04/2014
TITLE:	SHORT SPAN MASONRY LINTEL FOR RECEPTOR STYLE WINDOWS
SHEET:	A-4.1

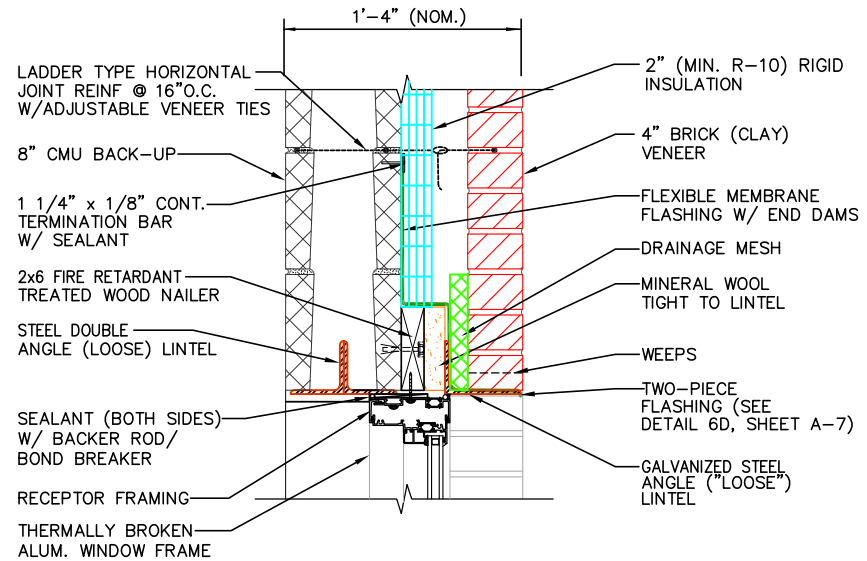
**NOTE:**

UNPROTECTED ALUMINUM DOOR AND WINDOW FRAMES CAN INTERACT WITH CEMENT-BASED MATERIALS AND INCUR DAMAGE. SEE PCA "MASONRY TODAY" VOLUME II, No. 1 FOR RECOMMENDATIONS.

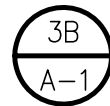
[www.cement.org/masonry/cc\\_al\\_frames.asp](http://www.cement.org/masonry/cc_al_frames.asp)



ISOMETRIC VIEW



SECTION VIEW



SHORT SPAN STEEL LINTEL  
FOR RECEPTOR STYLE WINDOWS

DAILEY ENGINEERING, INC.  
8485 STEPHENSON ROAD  
ONSTED, MI 49266  
PH. # (517) 467-9000  
FAX # (517) 467-9010



**111 MASONRY**  
Institute of Michigan

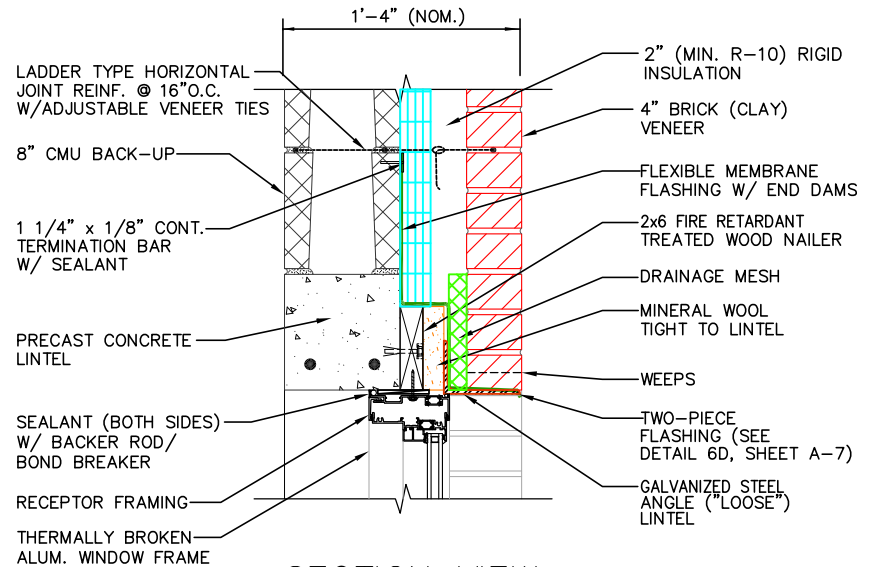
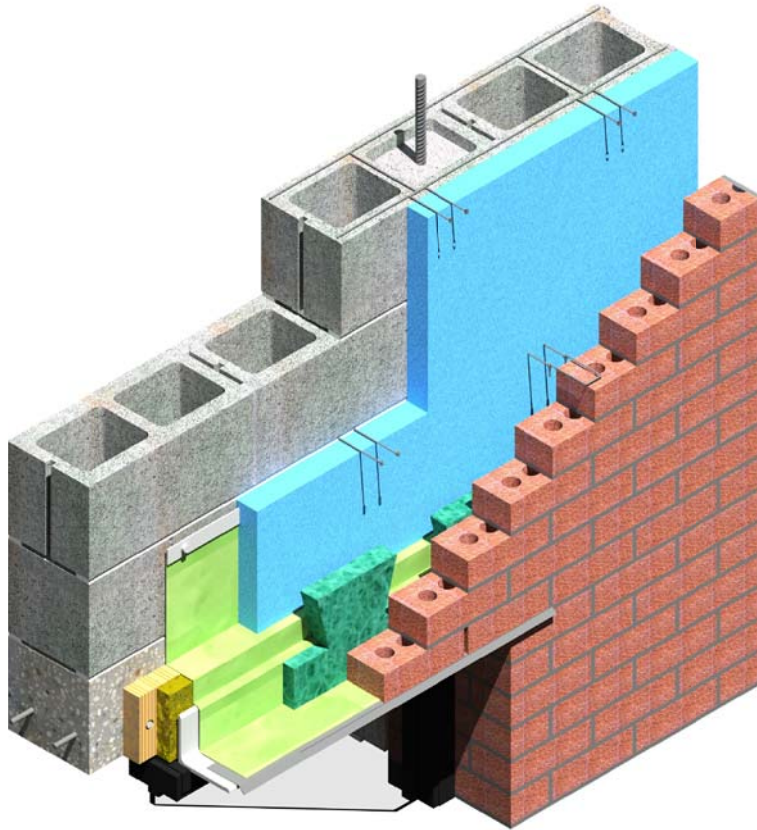
DETAIL SET MW.8.RB.2 (2" HIGH PERFORMANCE CAVITY WALL)

IN CHARGE:	MIM
DRAWN:	M.W.F.
APPROVED:	T.A.D.
DATE:	11/04/2014
TITLE:	SHORT SPAN STEEL LINTEL FOR RECEPTOR STYLE WINDOWS
SHEET:	A-4.2

**NOTE:**

UNPROTECTED ALUMINUM DOOR AND WINDOW FRAMES CAN INTERACT WITH CEMENT-BASED MATERIALS AND INCUR DAMAGE. SEE PCA "MASONRY TODAY" VOLUME II, No. 1 FOR RECOMMENDATIONS.

[www.cement.org/masonry/cc\\_al\\_frames.asp](http://www.cement.org/masonry/cc_al_frames.asp)



3C  
A-1

SHORT SPAN PRE-CAST LINTEL  
FOR RECEPTOR STYLE WINDOWS

DAILEY ENGINEERING, INC.  
8485 STEPHENSON ROAD  
ONSTED, MI 49266  
PH. # (517) 467-9000  
FAX # (517) 467-9010



**111 MASONRY**  
Institute of Michigan

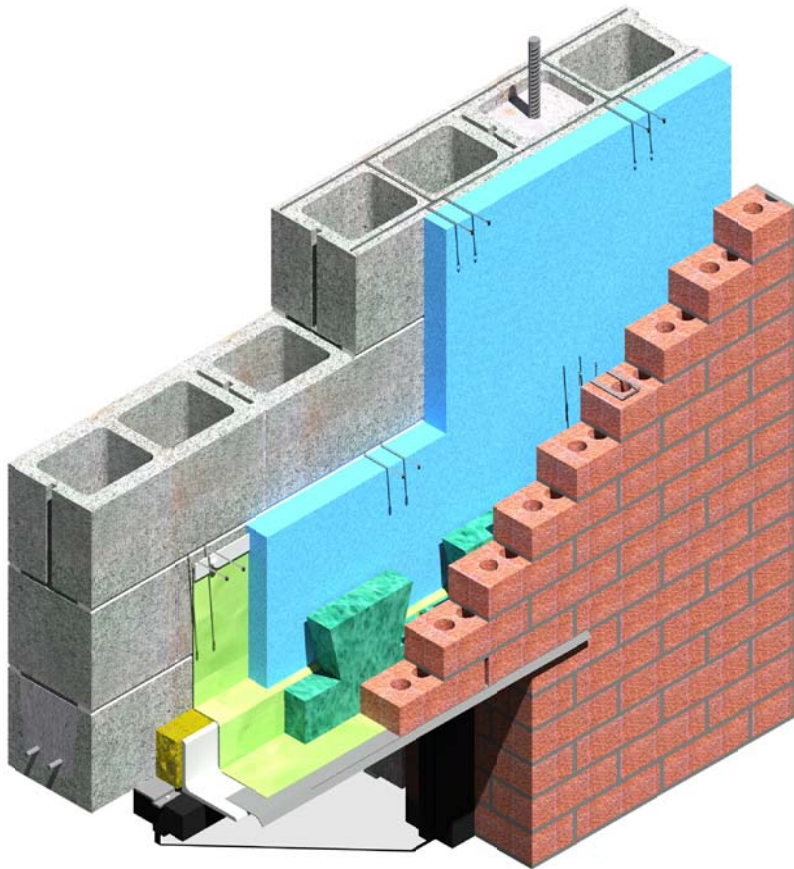
DETAIL SET MW.8.RB.2 (2" HIGH PERFORMANCE CAVITY WALL)

IN CHARGE:	MIM
DRAWN:	M.W.F.
APPROVED:	T.A.D.
DATE:	11/04/2014
TITLE:	SHORT SPAN PRE-CAST LINTEL FOR RECEPTOR STYLE WINDOWS
SHEET:	A-4.3

**NOTE:**

UNPROTECTED ALUMINUM DOOR AND WINDOW FRAMES CAN INTERACT WITH CEMENT-BASED MATERIALS AND INCUR DAMAGE. SEE PCA "MASONRY TODAY" VOLUME II, No. 1 FOR RECOMMENDATIONS.

[www.cement.org/masonry/cc\\_d\\_frames.asp](http://www.cement.org/masonry/cc_d_frames.asp)



ISOMETRIC VIEW

NOTE: MASONRY LINTEL  
MAY BE PREFABRICATED  
OR FIELD ASSEMBLED

LADDER TYPE HORIZONTAL  
JOINT REINF. @ 16" O.C.  
W/ ADJUSTABLE VENEER TIES

8" CMU BACK-UP

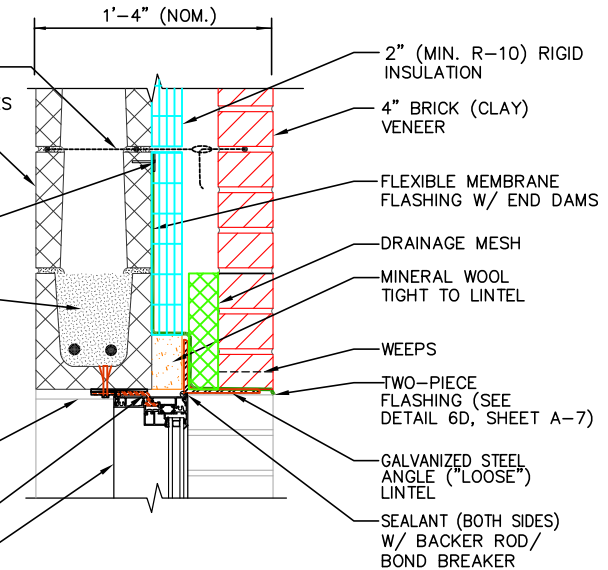
1 1/4" x 1/8" CONT.  
TERMINATION BAR  
W/ SEALANT

LINTEL UNIT  
(W/ REINF. PER  
STRUCTURAL DESIGN)  
GROUTED SOLID

BREAK METAL (OR  
OTHER ARCH. TREATMENT)

STRAP ANCHOR

THERMALLY BROKEN  
ALUM. WINDOW FRAME



SECTION VIEW

3D  
A-1

SHORT SPAN MASONRY LINTEL  
FOR STRAP STYLE WINDOWS

DALEY ENGINEERING, INC.  
8485 STEPHENSON ROAD  
ONSTED, MI 49266

PH. # (517) 467-9000  
FAX # (517) 467-9010



**111 MASONRY**  
Institute of Michigan

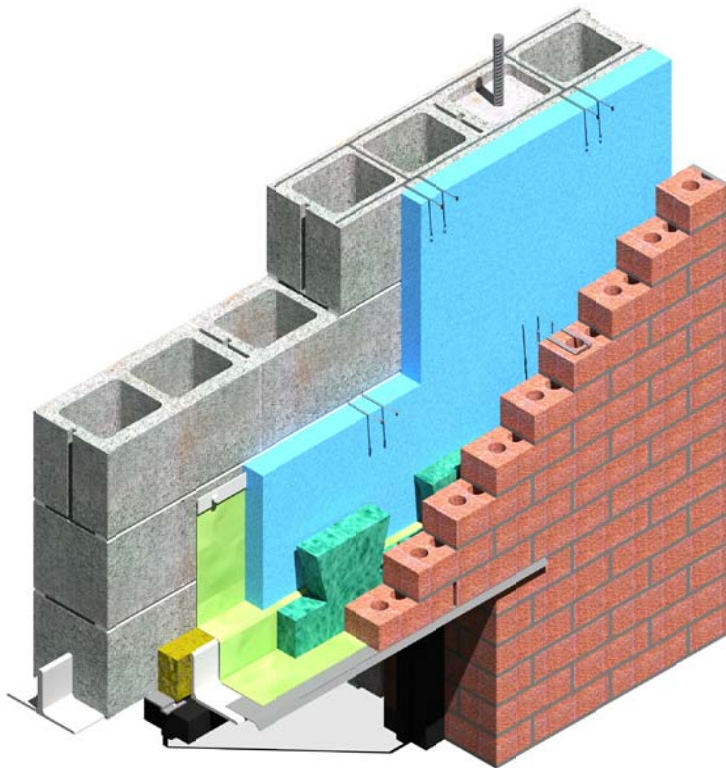
DETAIL SET MW.8.RB.2 (2" HIGH PERFORMANCE CAVITY WALL)

IN CHARGE:	MIM
DRAWN:	M.W.F.
APPROVED:	T.A.D.
DATE:	11/04/2014
TITLE:	SHORT SPAN MASONRY LINTEL FOR STRAP STYLE WINDOWS
SHEET:	A-4.4

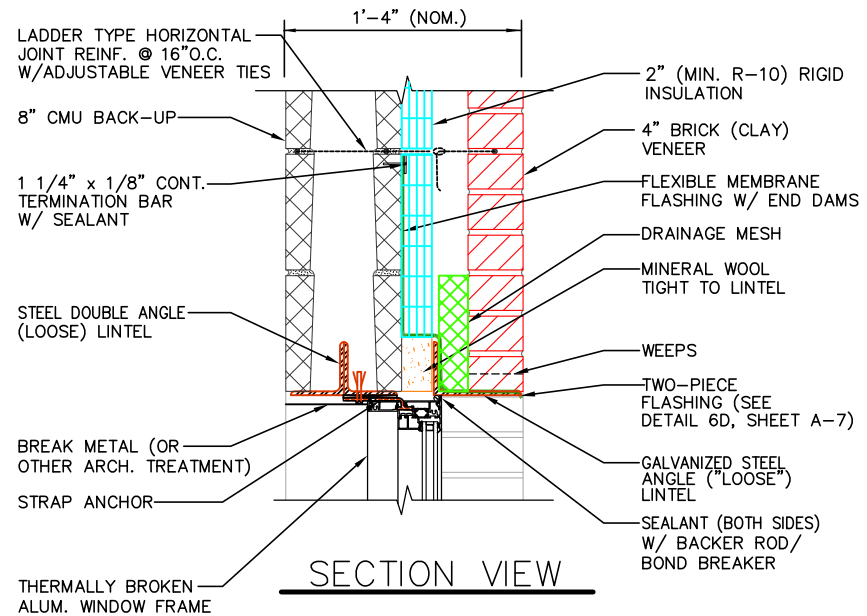
**NOTE:**

UNPROTECTED ALUMINUM DOOR AND WINDOW FRAMES CAN INTERACT WITH CEMENT-BASED MATERIALS AND INCUR DAMAGE. SEE PCA "MASONRY TODAY" VOLUME II, No. 1 FOR RECOMMENDATIONS.

[www.cement.org/masonry/cc\\_d\\_frames.asp](http://www.cement.org/masonry/cc_d_frames.asp)



ISOMETRIC VIEW



SECTION VIEW

3E  
A-1

SHORT SPAN STEEL LINTEL  
FOR STRAP STYLE WINDOWS

DALEY ENGINEERING, INC.  
8485 STEPHENSON ROAD  
ONSTED, MI 49286  
PH. # (517) 467-9000  
FAX # (517) 467-9010



**111 MASONRY**  
Institute of Michigan

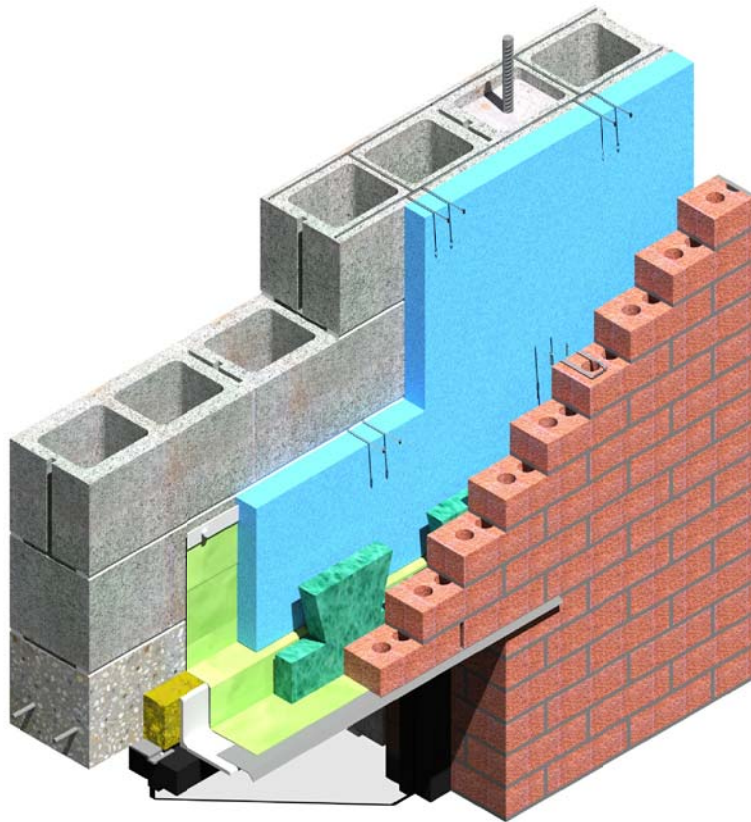
DETAIL SET MW.8.RB.2 (2" HIGH PERFORMANCE CAVITY WALL)

IN CHARGE:	MIM
DRAWN:	M.W.F.
APPROVED:	T.A.D.
DATE:	11/04/2014
TITLE:	SHORT SPAN STEEL LINTEL FOR STRAP STYLE WINDOWS
SHEET:	A-4.5

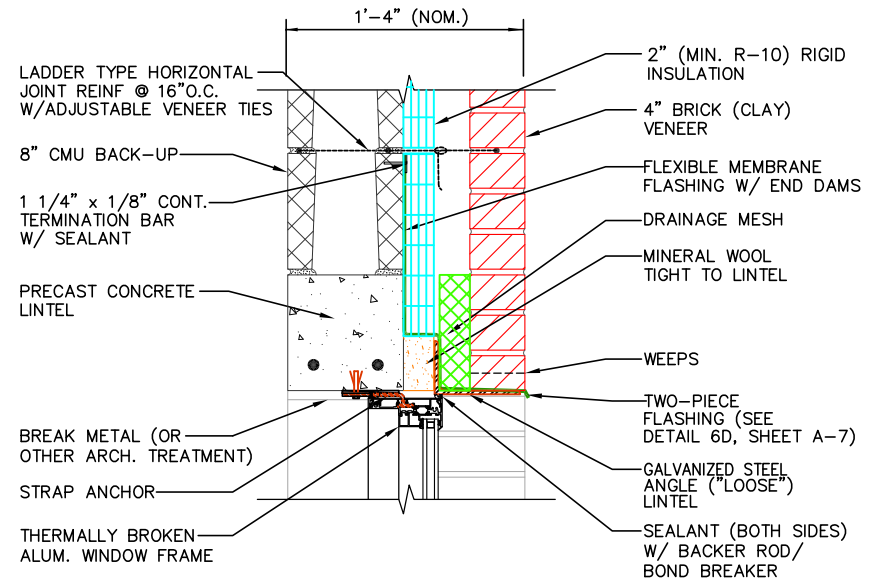
**NOTE:**

UNPROTECTED ALUMINUM DOOR AND WINDOW FRAMES CAN INTERACT WITH CEMENT-BASED MATERIALS AND INCUR DAMAGE. SEE PCA "MASONRY TODAY" VOLUME II, No. 1 FOR RECOMMENDATIONS.

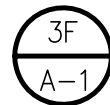
[www.cement.org/masonry/cc\\_al\\_frames.asp](http://www.cement.org/masonry/cc_al_frames.asp)



ISOMETRIC VIEW



SECTION VIEW



SHORT SPAN PRE-CAST LINTEL  
FOR STRAP STYLE WINDOWS

DALEY ENGINEERING, INC.  
8485 STEPHENSON ROAD  
ONSTED, MI 49266  
PH. # (517) 467-9000  
FAX # (517) 467-9010



**111 MASONRY**  
Institute of Michigan

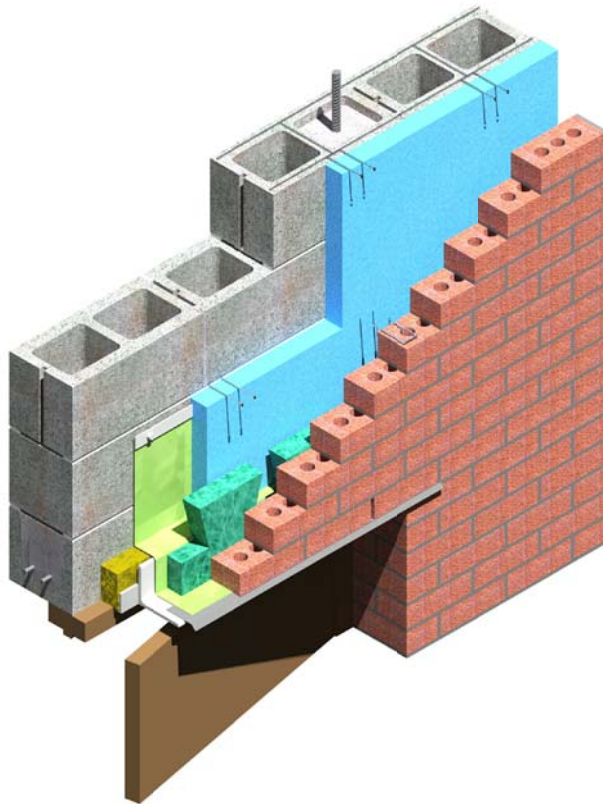
DETAIL SET MW.8.RB.2 (2" HIGH PERFORMANCE CAVITY WALL)

IN CHARGE:	MIM
DRAWN:	M.W.F.
APPROVED:	T.A.D.
DATE:	11/04/2014
TITLE:	SHORT SPAN PRE-CAST LINTEL FOR STRAP STYLE WINDOWS
SHEET:	A-4.6

**NOTE:**

UNPROTECTED ALUMINUM DOOR AND WINDOW FRAMES CAN INTERACT WITH CEMENT-BASED MATERIALS AND INCUR DAMAGE. SEE PCA "MASONRY TODAY" VOLUME II, No. 1 FOR RECOMMENDATIONS.

[www.cement.org/masonry/cc\\_al\\_frames.asp](http://www.cement.org/masonry/cc_al_frames.asp)



ISOMETRIC VIEW

**NOTE: MASONRY LINTEL  
MAY BE PREFABRICATED  
OR FIELD ASSEMBLED**

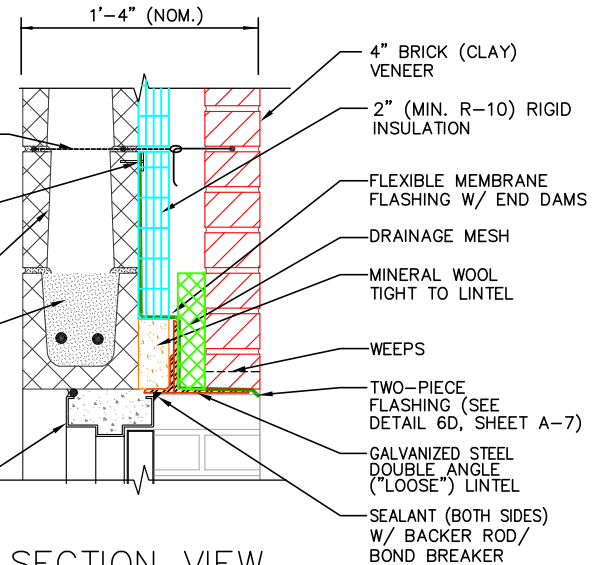
LADDER TYPE HORIZONTAL  
JOINT REINF. @ 16" O.C.  
W/ADJUSTABLE VENEER TIES

1 1/4" x 1/8" CONT.  
TERMINATION BAR  
W/ SEALANT

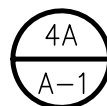
8" CMU BACK-UP

LINTEL UNIT  
(W/ REINF. PER  
STRUCTURAL DESIGN)  
GROUTED SOLID

GROUT FILLED  
DOOR FRAME



SECTION VIEW



SHORT SPAN MASONRY  
LINTEL FOR DOOR OPENING

DAILEY ENGINEERING, INC.  
8485 STEPHENSON ROAD  
ONSTED, MI 49266

PH. # (517) 467-9000  
FAX # (517) 467-9010



**111 MASONRY**  
Institute of Michigan

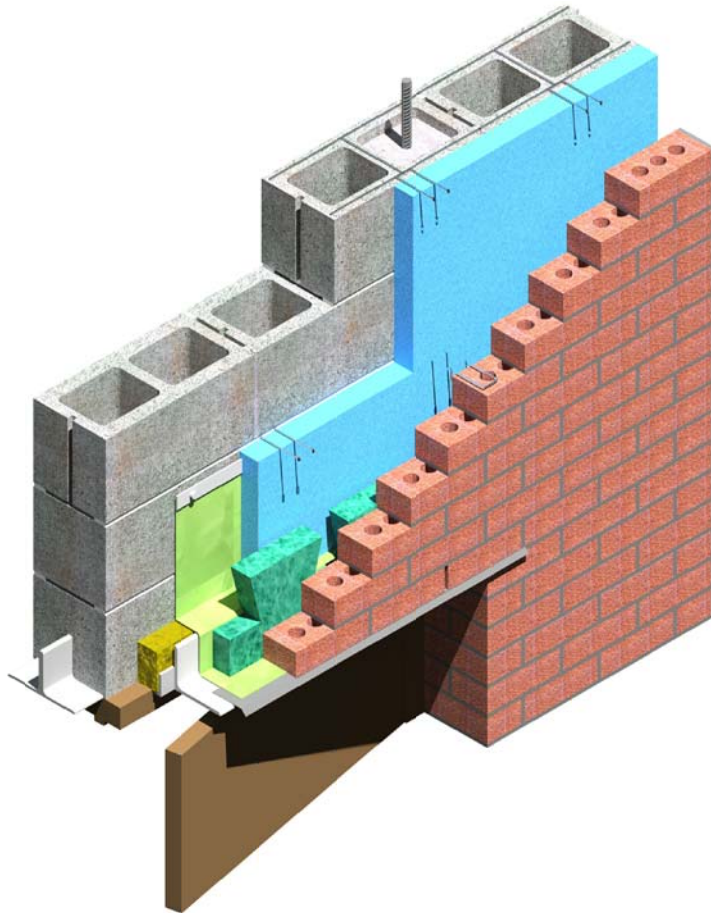
DETAIL SET MW.8.RB.2 (2" HIGH PERFORMANCE CAVITY WALL)

IN CHARGE:	MIM
DRAWN:	M.W.F.
APPROVED:	T.A.D.
DATE:	11/04/2014
TITLE:	SHORT SPAN MASONRY LINTEL FOR DOOR OPENING
SHEET:	A-5.1

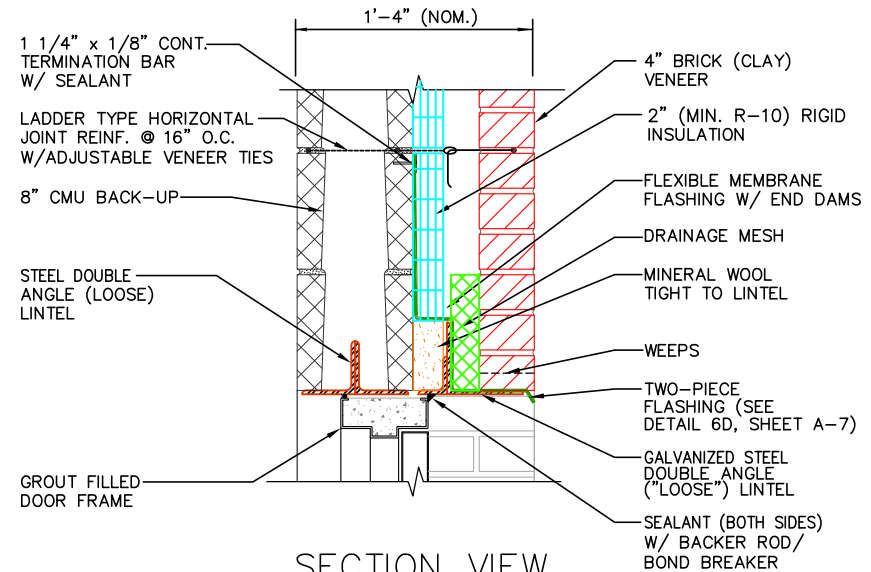
**NOTE:**

UNPROTECTED ALUMINUM DOOR AND WINDOW FRAMES CAN INTERACT WITH CEMENT-BASED MATERIALS AND INCUR DAMAGE. SEE PCA "MASONRY TODAY" VOLUME II, No. 1 FOR RECOMMENDATIONS.

[www.cement.org/masonry/cc\\_al\\_frames.asp](http://www.cement.org/masonry/cc_al_frames.asp)



ISOMETRIC VIEW

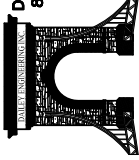


SECTION VIEW

4B  
A-1

SHORT SPAN STEEL  
LINTEL FOR DOOR OPENING

DAILEY ENGINEERING, INC.  
8485 STEPHENSON ROAD  
ONSTED, MI 49266  
PH. # (517) 467-9000  
FAX # (517) 467-9010



**111 MASONRY**  
Institute of Michigan

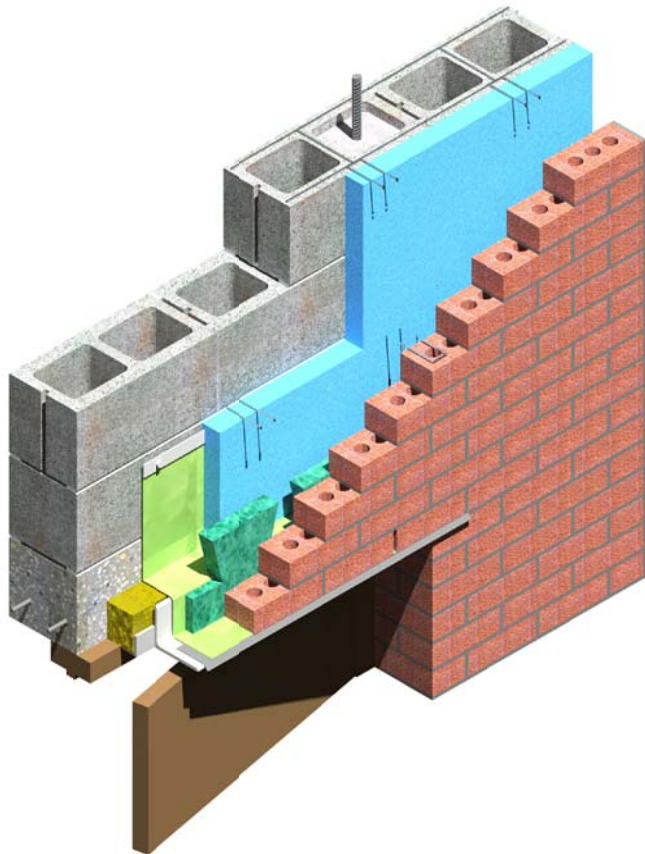
DETAIL SET MW.8.RB.2 (2" HIGH PERFORMANCE CAVITY WALL)

IN CHARGE:	MIM
DRAWN:	M.W.F.
APPROVED:	T.A.D.
DATE:	11/04/2014
TITLE:	SHORT SPAN STEEL LINTEL FOR DOOR OPENING
SHEET:	A-5.2

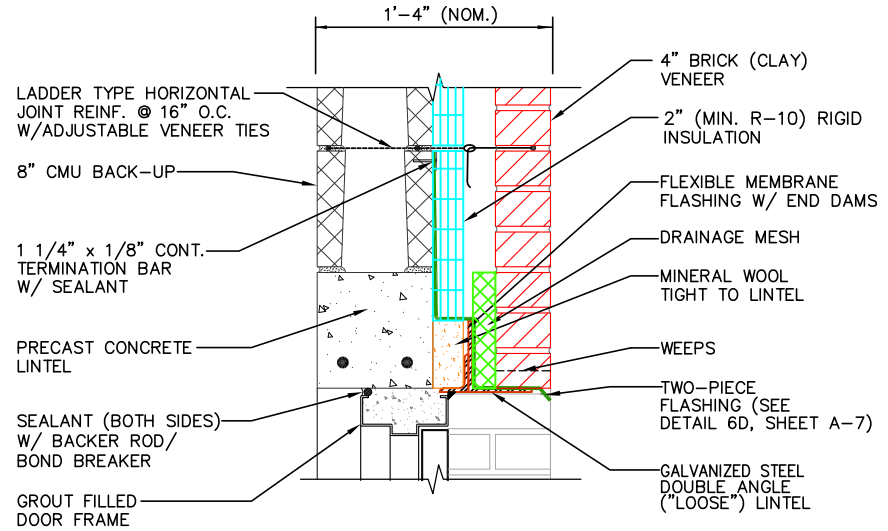
**NOTE:**

UNPROTECTED ALUMINUM DOOR AND WINDOW FRAMES CAN INTERACT WITH CEMENT-BASED MATERIALS AND INCUR DAMAGE. SEE PCA "MASONRY TODAY" VOLUME II, No. 1 FOR RECOMMENDATIONS.

[www.cement.org/masonry/cc\\_al\\_frames.asp](http://www.cement.org/masonry/cc_al_frames.asp)



ISOMETRIC VIEW



SECTION VIEW

4C  
A-1

SHORT SPAN PRE-CAST  
LINTEL FOR DOOR OPENING

DAILEY ENGINEERING, INC.  
8485 STEPHENSON ROAD  
ONSTED, MI 49266  
PH. # (517) 467-9000  
FAX # (517) 467-9010

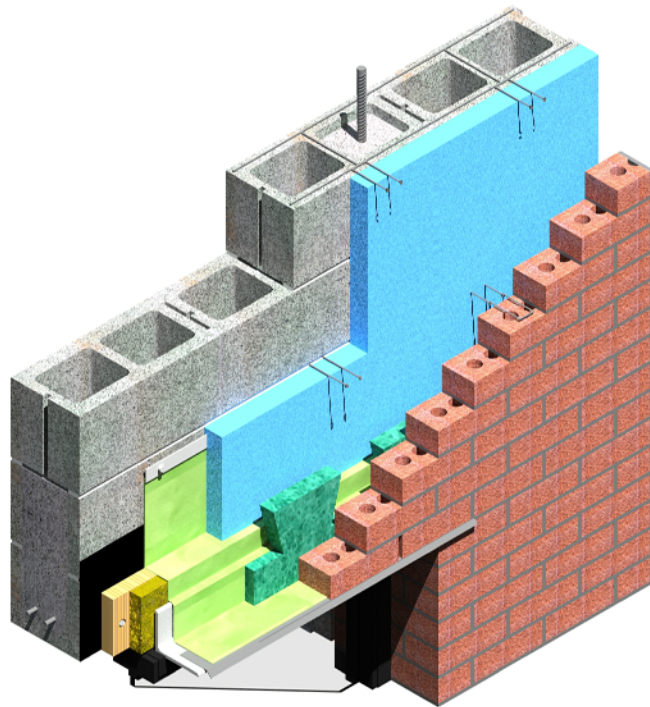
**111 MASONRY**  
Institute of Michigan

DETAIL SET MW.8.RB.2 (2" HIGH PERFORMANCE CAVITY WALL)

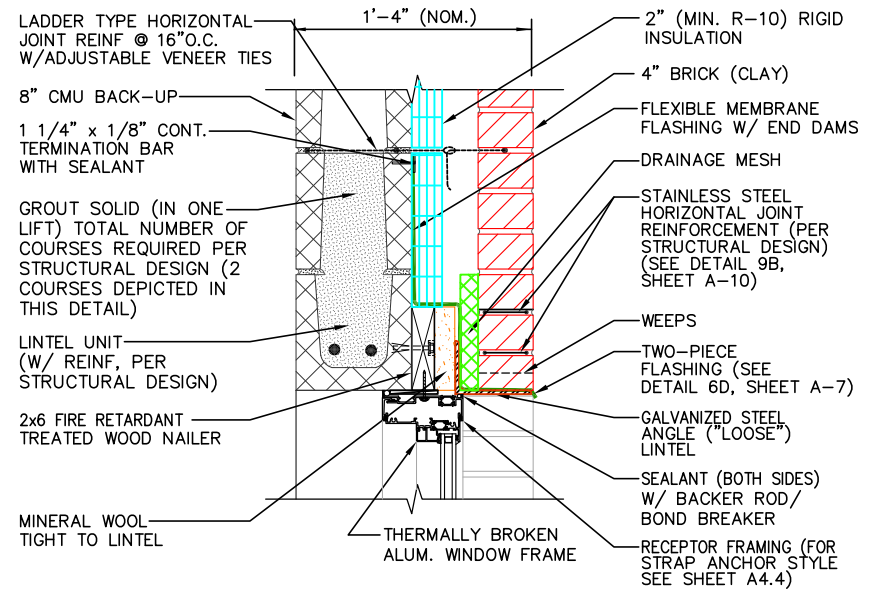
IN CHARGE:	MIM
DRAWN:	M.W.F.
APPROVED:	T.A.D.
DATE:	11/04/2014
TITLE:	SHORT SPAN PRE-CAST LINTEL FOR DOOR OPENING
SHEET:	A-5.3

# NOTES:

- 1) FOR ADDITIONAL INFORMATION ON THE REINFORCED BRICK LINTEL DEPICTED IN THIS DETAIL, SEE DETAIL 9B ON SHEET A-10.
- 2) UNPROTECTED ALUMINUM DOOR AND WINDOW FRAMES CAN INTERACT WITH CEMENT-BASED MATERIALS AND INCUR DAMAGE. SEE PC "MASONRY TODAY" VOLUME II, No. 1 FOR RECOMMENDATIONS.  
[www.cement.org/masonry/cc\\_al\\_frames.asp](http://www.cement.org/masonry/cc_al_frames.asp)



ISOMETRIC VIEW



SECTION VIEW

5A

A-1

LONG SPAN MASONRY LINTEL FOR WINDOW OPENING

DAILEY ENGINEERING, INC.  
8485 STEPHENSON ROAD  
ONSTED, MI 49266  
PH. # (517) 467-9000  
FAX # (517) 467-9010



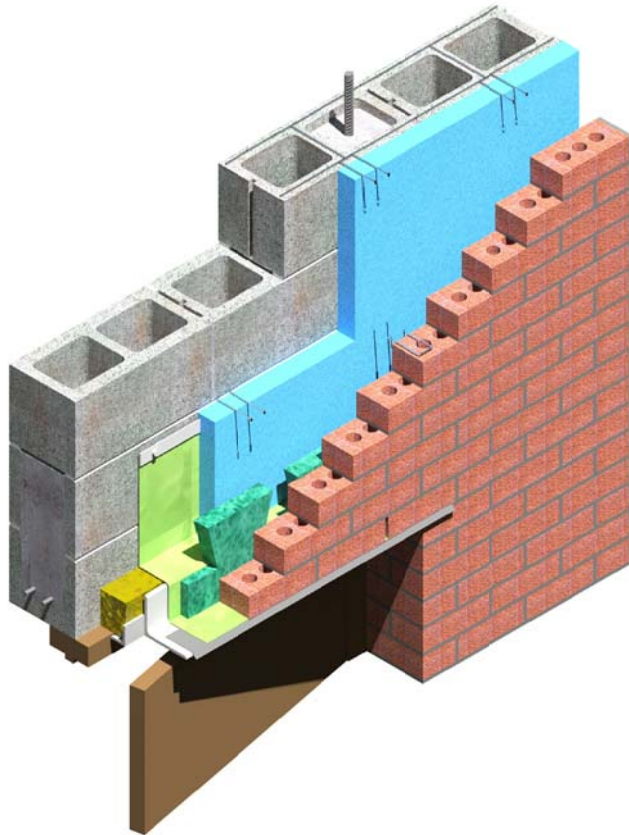
**111 MASONRY**  
Institute of Michigan

DETAIL SET MW.8.RB.2 (2" HIGH PERFORMANCE CAVITY WALL)

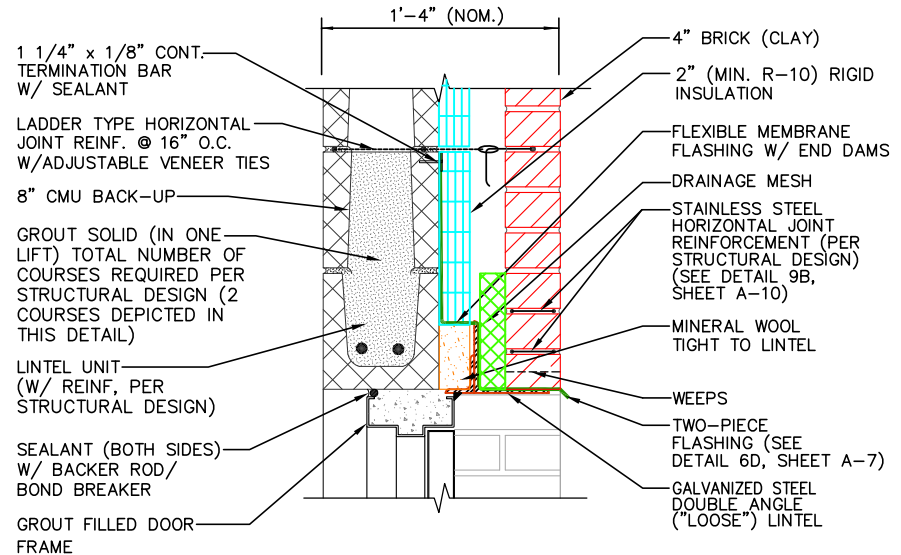
IN CHARGE:	MIM
DRAWN:	M.W.F.
APPROVED:	T.A.D.
DATE:	11/04/2014
TITLE:	LONG SPAN MASONRY LINTEL FOR WINDOW OPENING
SHEET:	A-6.1

# NOTES:

- 1) FOR ADDITIONAL INFORMATION ON THE REINFORCED BRICK LINTEL DEPICTED IN THIS DETAIL, SEE DETAIL 9B ON SHEET A-10.
- 2) UNPROTECTED ALUMINUM DOOR AND WINDOW FRAMES CAN INTERACT WITH CEMENT-BASED MATERIALS AND INCUR DAMAGE. SEE PC "MASONRY TODAY" VOLUME II, No. 1 FOR RECOMMENDATIONS.  
[www.cement.org/masonry/cc\\_al\\_frames.asp](http://www.cement.org/masonry/cc_al_frames.asp)



ISOMETRIC VIEW



SECTION VIEW

5B  
A-1

## LONG SPAN MASONRY LINTEL FOR OPENING WITH MULTIPLE PEDESTRIAN DOORS

DAILEY ENGINEERING, INC.  
8485 STEPHENSON ROAD  
ONSTED, MI 49266  
PH. # (517) 467-9000  
FAX # (517) 467-9010

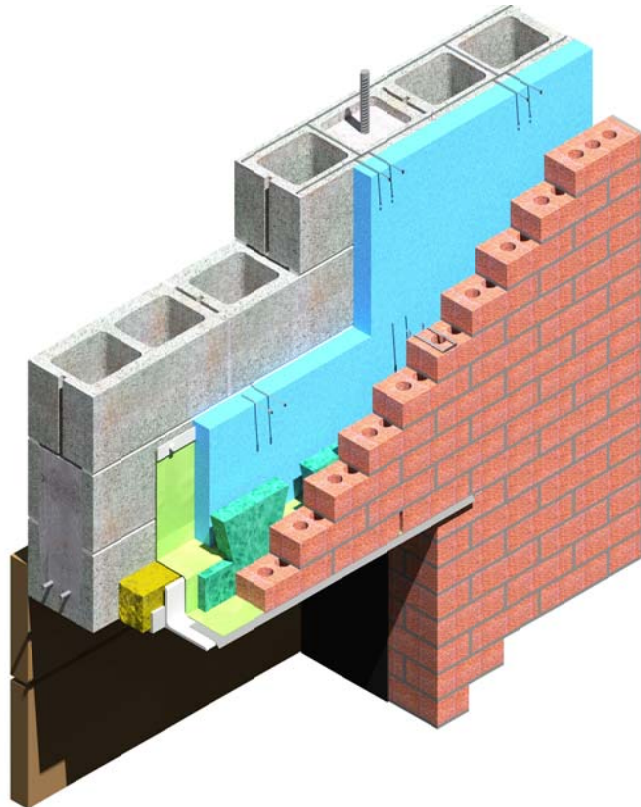
**111 MASONRY**  
Institute of Michigan

DETAIL SET MW.8.RB.2 (2" HIGH PERFORMANCE CAVITY WALL)

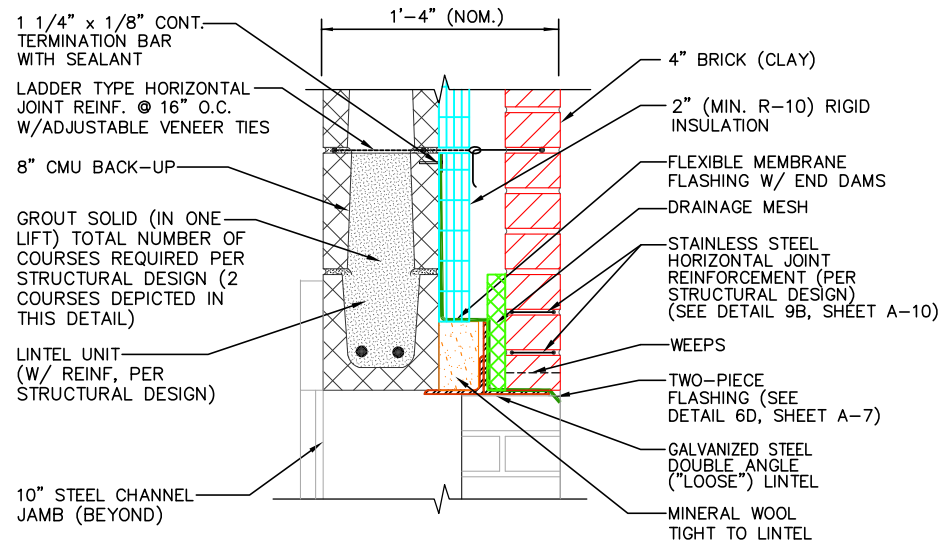
IN CHARGE:	MIM
DRAWN:	M.W.F.
APPROVED:	T.A.D.
DATE:	11/04/2014
TITLE:	LONG SPAN MASONRY LINTEL FOR MULTIPLE PEDESTRIAN DOOR OPENING
SHEET:	A-6.2

# NOTES:

- 1) FOR ADDITIONAL INFORMATION ON THE REINFORCED BRICK LINTEL DEPICTED IN THIS DETAIL, SEE DETAIL 9B ON SHEET A-10.
- 2) UNPROTECTED ALUMINUM DOOR AND WINDOW FRAMES CAN INTERACT WITH CEMENT-BASED MATERIALS AND INCUR DAMAGE. SEE PC "MASONRY TODAY" VOLUME II, No. 1 FOR RECOMMENDATIONS.  
[www.cement.org/masonry/cc\\_al\\_frames.asp](http://www.cement.org/masonry/cc_al_frames.asp)



ISOMETRIC VIEW



SECTION VIEW

5C  
A-1

LONG SPAN MASONRY LINTEL  
FOR OVERHEAD DOOR OPENING

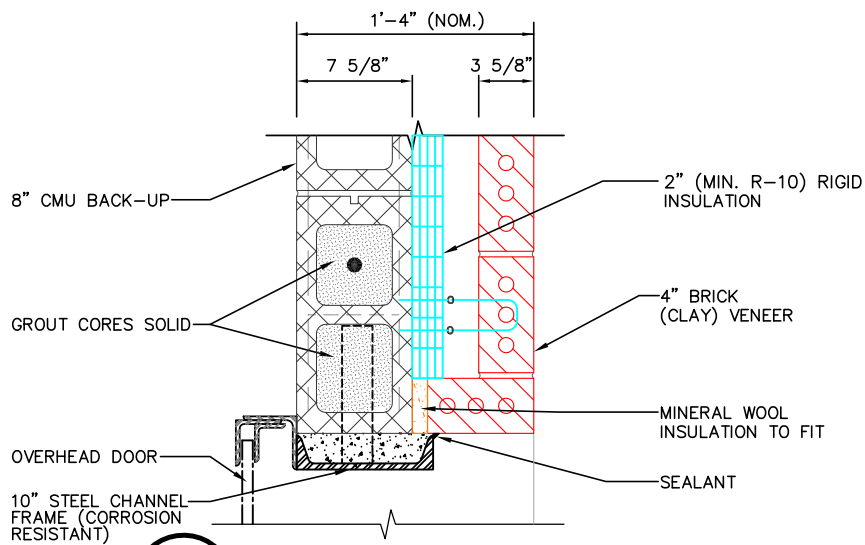
DAILEY ENGINEERING, INC.  
8485 STEPHENSON ROAD  
ONSTED, MI 49286  
PH. # (517) 467-9000  
FAX # (517) 467-9010

**MASONRY**  
Institute of Michigan

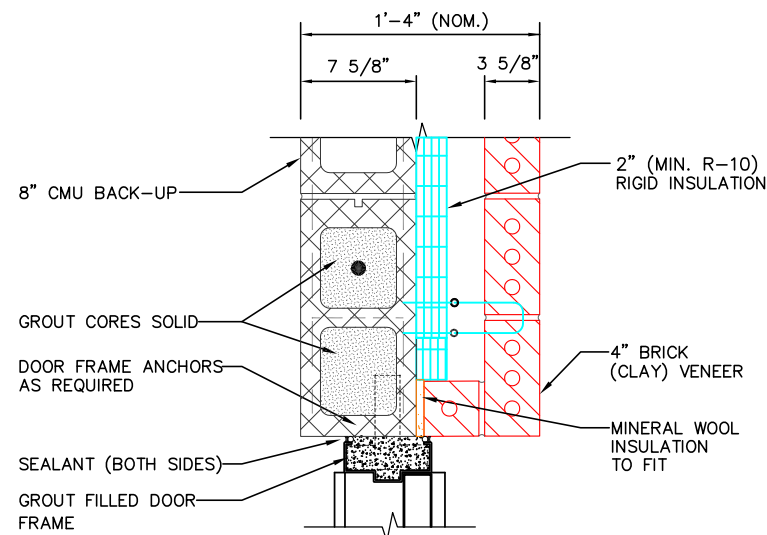
DETAIL SET MW.8.RB.2 (2" HIGH PERFORMANCE CAVITY WALL)

IN CHARGE:	MIM
DRAWN:	M.W.F.
APPROVED:	T.A.D.
DATE:	11/04/2014
TITLE:	LONG SPAN MASONRY LINTEL FOR OVERHEAD DOOR OPENING
SHEET:	A-6.3

IN CHARGE:	MIM
DRAWN:	M.W.F.
APPROVED:	T.A.D.
DATE:	11/04/2014
TITLE:	JAMB DETAILS & FLASHING DETAIL
SHEET:	A-7



**6C** OVERHEAD DOOR JAMB DETAIL  
A-1



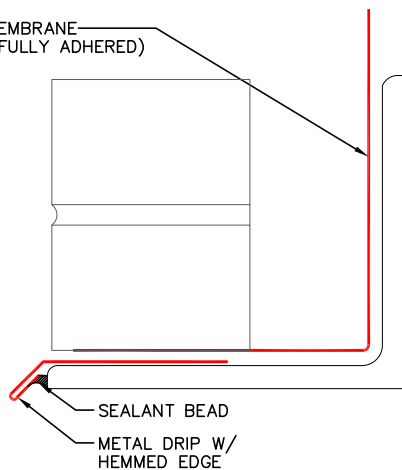
**6A** PEDESTRIAN DOOR JAMB DETAIL  
A-1

**NOTES:**

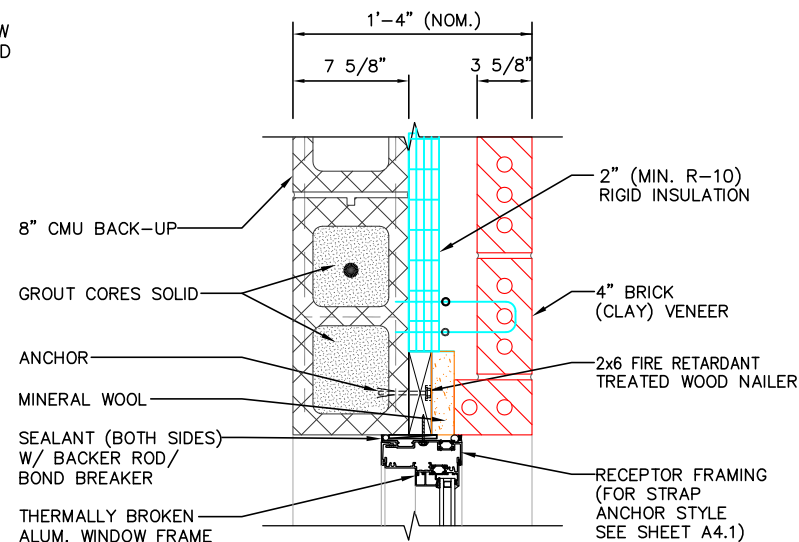
1) UNPROTECTED ALUMINUM DOOR AND WINDOW FRAMES CAN INTERACT WITH CEMENT-BASED MATERIALS AND INCUR DAMAGE. SEE PCA "MASONRY TODAY" VOLUME II, No. 1 FOR RECOMMENDATIONS.  
[www.cement.org/masonry/cc\\_al\\_frames.asp](http://www.cement.org/masonry/cc_al_frames.asp)

2) BRICK TIES SHALL BE PRESENT WITHIN 12" OF JAMB ENDS

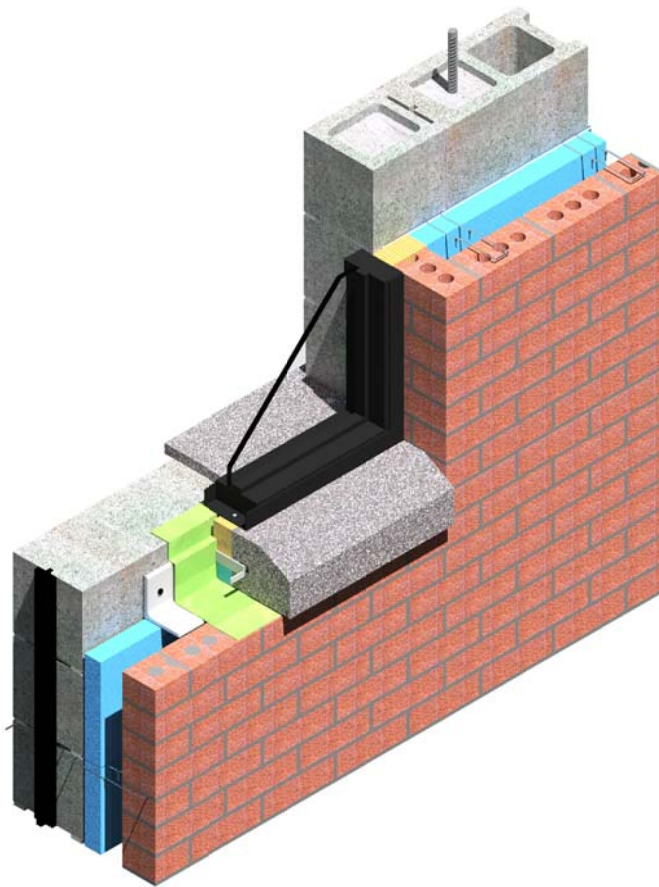
FLEXIBLE MEMBRANE FLASHING (FULLY ADHERED)



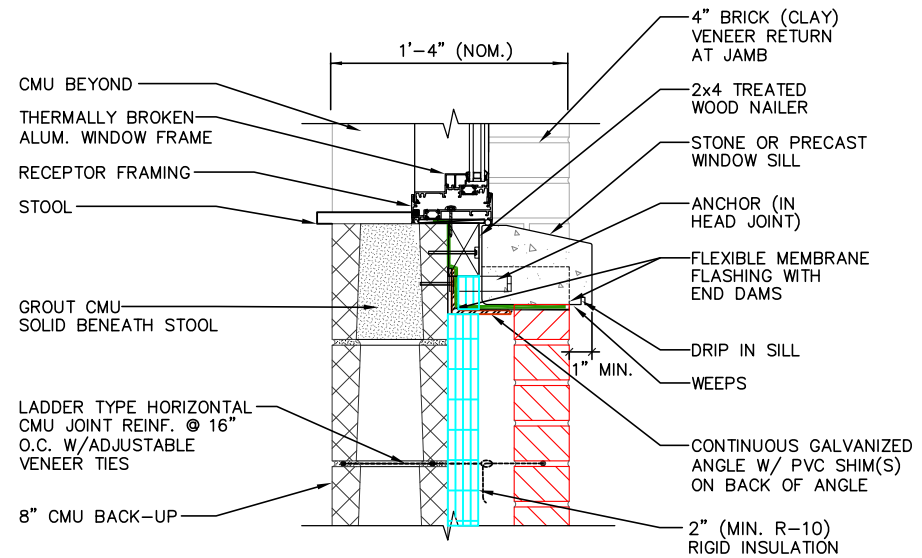
**6D** TWO PIECE FLASHING DETAIL  
A-4, A-5, & A-6



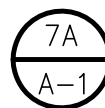
**6B** WINDOW JAMB DETAIL  
A-1 (USING RECEPTOR)



ISOMETRIC VIEW



SECTION VIEW



STONE/PRECAST SILL  
FOR RECEPTOR STYLE WINDOWS

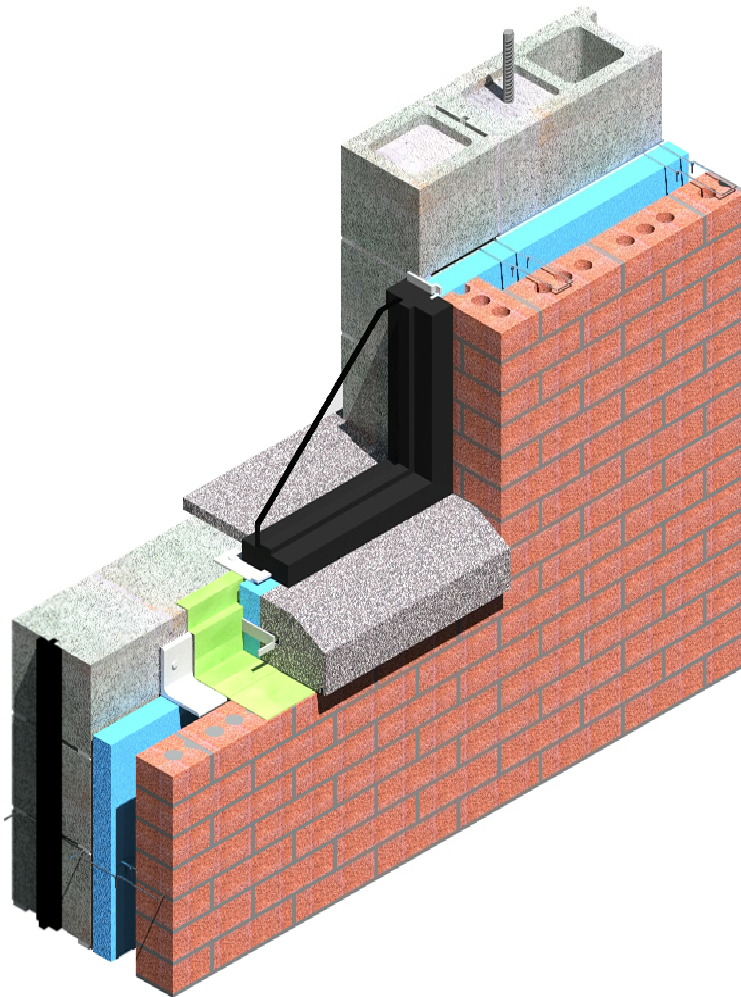
DAILEY ENGINEERING, INC.  
8485 STEPHENSON ROAD  
ONSTED, MI 49286  
PH. # (517) 467-9000  
FAX # (517) 467-9010



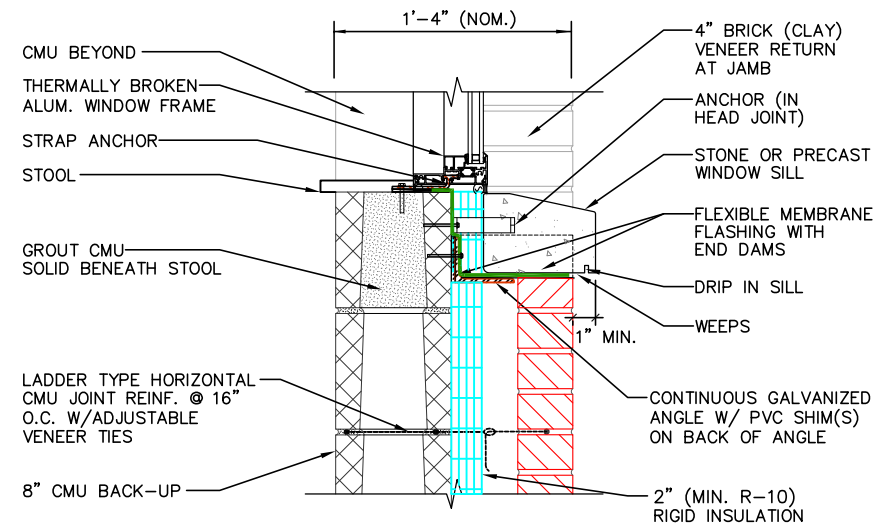
**111 MASONRY**  
Institute of Michigan

DETAIL SET MW.8.RB.2 (2" HIGH PERFORMANCE CAVITY WALL)

IN CHARGE:	MIM
DRAWN:	M.W.F.
APPROVED:	T.A.D.
DATE:	11/04/2014
TITLE:	STONE/PRECAST SILL FOR RECEPTOR STYLE WINDOWS
SHEET:	A-8.1



ISOMETRIC VIEW



SECTION VIEW

STONE/PRECAST SILL  
FOR STRAP STYLE WINDOWS

7B

A-1

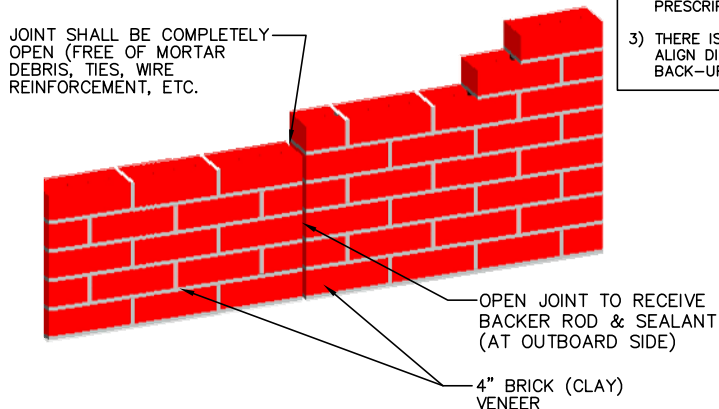
DAILEY ENGINEERING, INC.  
8485 STEPHENSON ROAD  
ONSTED, MI 49286  
PH. # (517) 467-9000  
FAX # (517) 467-9010



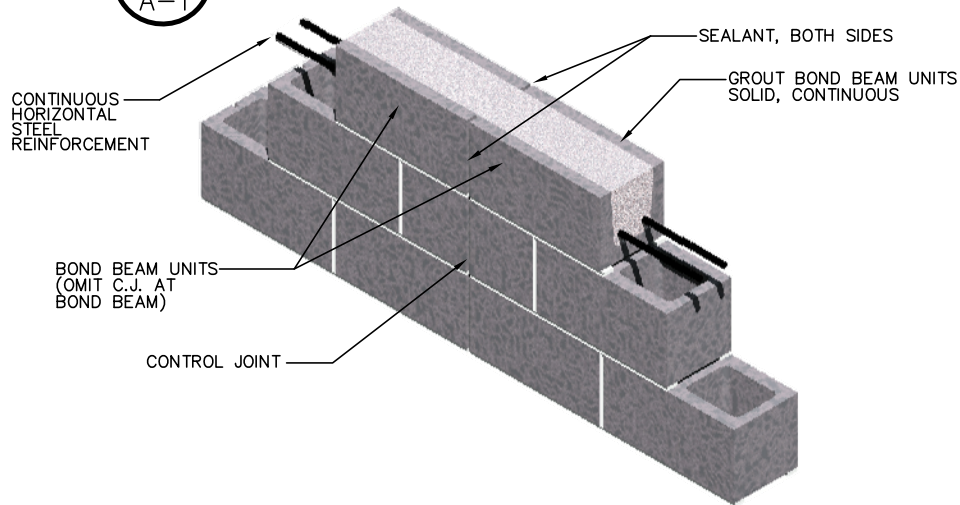
**111 MASONRY**  
Institute of Michigan

DETAIL SET MW.8.RB.2 (2" HIGH PERFORMANCE CAVITY WALL)

IN CHARGE:	MIM
DRAWN:	M.W.F.
APPROVED:	T.A.D.
DATE:	11/04/2014
TITLE:	STONE/PRECAST SILL FOR STRAP STYLE WINDOWS
SHEET:	A-8.2

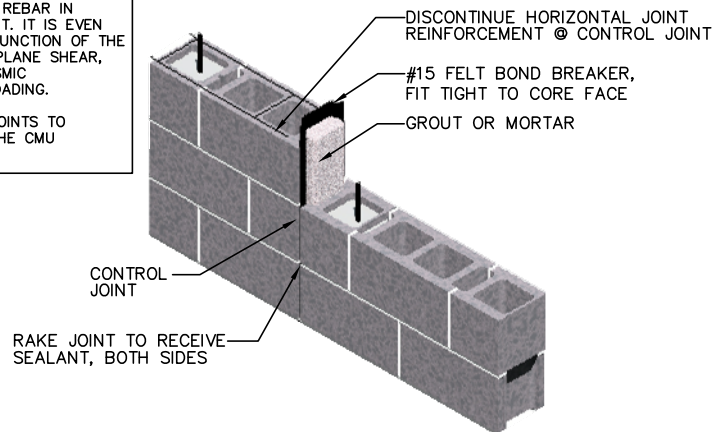


8D  
A-1  
BRICK EXPANSION JOINT (EJ)

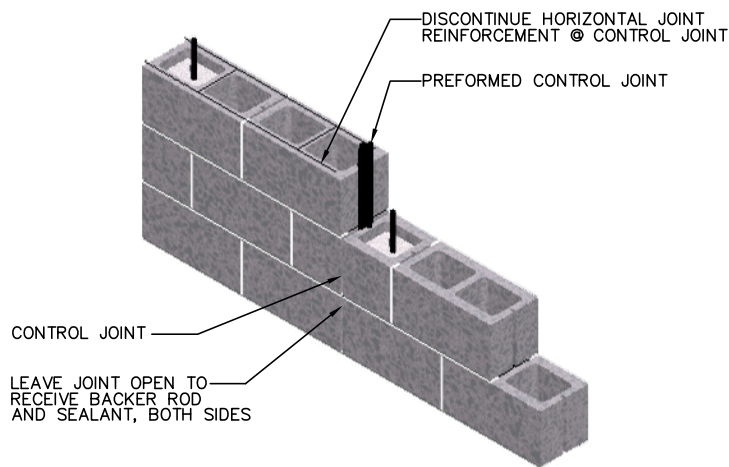


8C  
A-1  
MASONRY CONTROL JOINT @ CONTINUOUS BOND BEAM DETAIL (PER STRUCTURAL REQUIREMENTS)

- NOTES TO DESIGN PROFESSIONAL:**
- 1) DETAIL "8A" WILL ACHIEVE UP TO A 4 HOUR FIRE RATING, DETAIL "8B" WILL ACHIEVE UP TO A 2 HOUR FIRE RATING.
  - 2) IT IS USUALLY NOT NECESSARY TO INSTALL VERTICAL REBAR IN BOTH OF THE CELLS ADJACENT TO THE CONTROL JOINT. IT IS EVEN POSSIBLE THAT DOING SO CAN INTERFERE WITH THE FUNCTION OF THE CONTROL JOINT. HOWEVER, FOR WALLS RESISTING IN-PLANE SHEAR, SUCH REINFORCEMENT MAY BE REQUIRED DUE TO SEISMIC PRESCRIPTIVE REQUIREMENTS AND/OR STRUCTURAL LOADING.
  - 3) THERE IS USUALLY NO NEED FOR BRICK EXPANSION JOINTS TO ALIGN DIRECTLY WITH CONTROL JOINT LOCATIONS IN THE CMU BACK-UP.

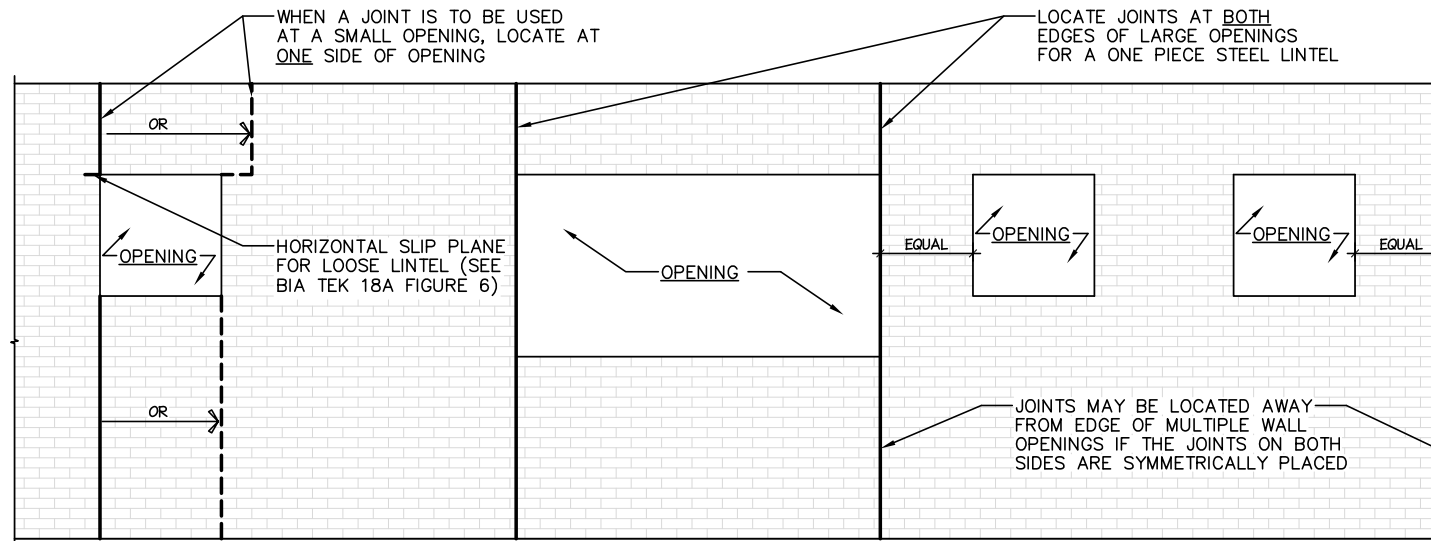


8A  
A-1  
CMU BACK-UP CONTROL JOINT - "MICHIGAN TYPE"

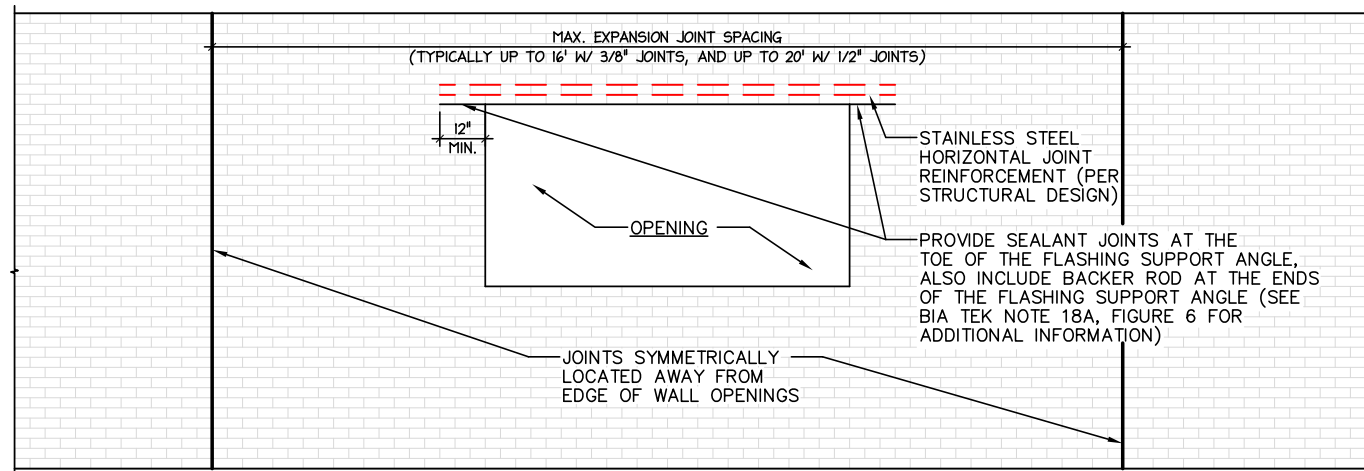


8B  
A-1  
CMU BACK-UP CONTROL JOINT - "GASKET TYPE"

IN CHARGE:	MIM
DRAWN:	M.W.F.
APPROVED:	T.A.D.
DATE:	11/04/2014
TITLE:	CONTROL/EXPANSION JOINT DETAILS
SHEET:	A-9



9A TRADITIONAL JOINT PLACEMENT – ELEVATION VIEW  
A-10



9B JOINT PLACEMENT W/ "REINFORCED VENEER LINTEL OPENINGS" – ELEVATION VIEW  
A-10

NOTE:  
SEE BIA TEK NOTE 18A AND  
"BRICK EXPANSION JOINTS AND  
WALL OPENINGS" (BY J. GREGG  
BORCHELT, PE) (PUBLISHED IN  
"THE STORY POLE" JULY/AUG.  
2007 VOL. 38 NO. 4) FOR  
ADDITIONAL GUIDANCE ON  
LOCATING EXPANSION JOINTS.

NOTE:  
TYPICALLY EXPANSION JOINTS HAVE  
BEEN LOCATED AT OR VERY CLOSE  
TO THE SIDES OF OPENINGS.  
HOWEVER IT IS PREFERRED FOR  
EXPANSION JOINTS TO BE LOCATED  
AWAY FROM THE EDGES OF THE  
OPENINGS AND TO ADD  
REINFORCEMENT ABOVE THE  
OPENINGS TO FUNCTION AS THE  
STRUCTURAL LINTEL. DETAIL 9B  
ILLUSTRATES THE APPLICATION OF  
THIS APPROACH.

## BRICK EXPANSION JOINT LOCATION DETAILS

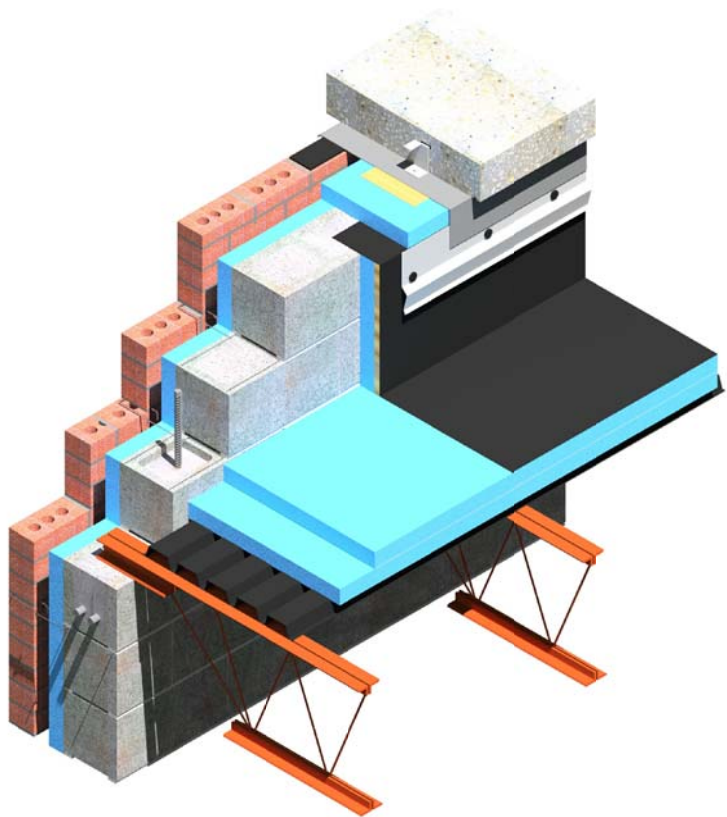
DALEY ENGINEERING, INC.  
8485 STEPHENSON ROAD  
ONSTED, MI 49266  
PH. # (517) 467-9000  
FAX # (517) 467-9010



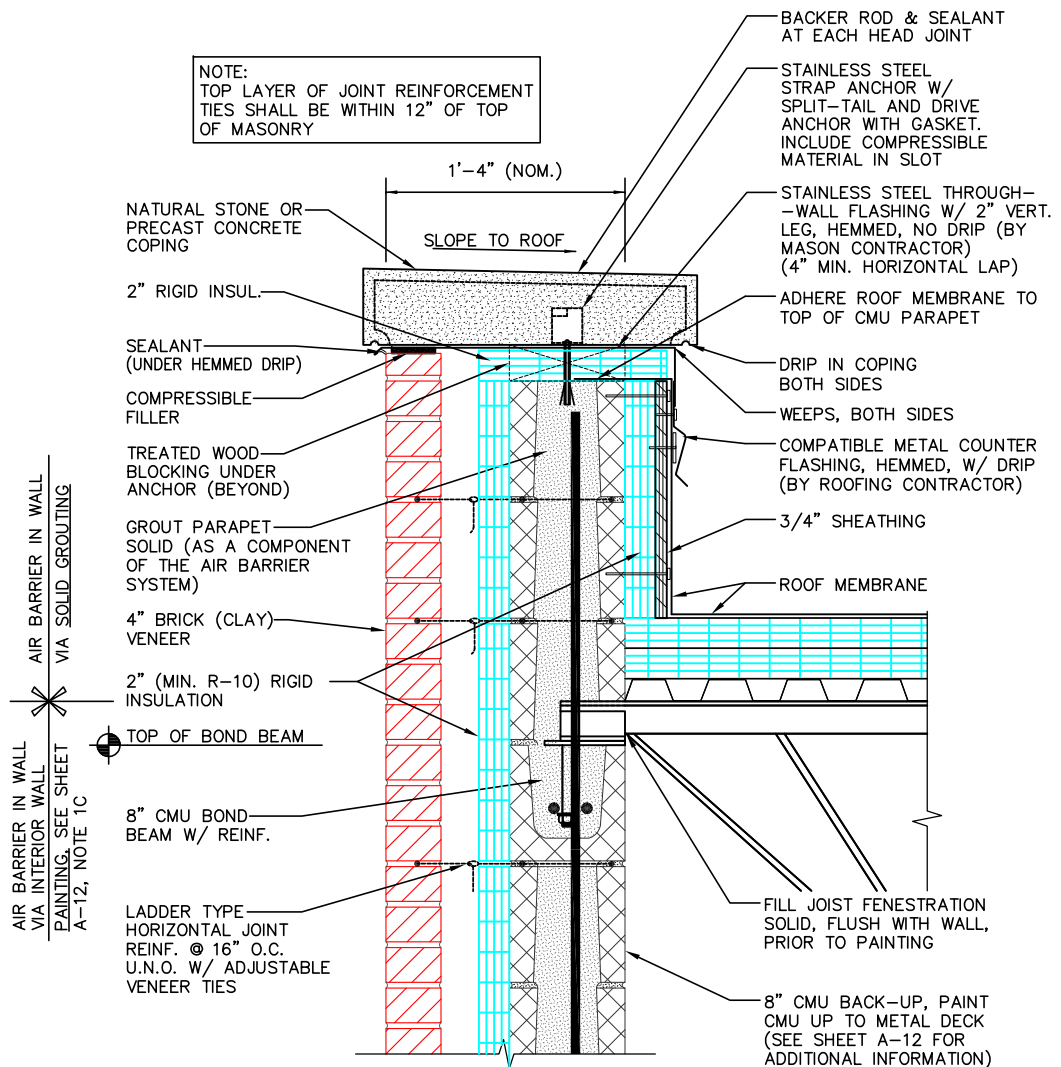
**111 MASONRY**  
Institute of Michigan

DETAIL SET MW.8.RB.2 (2" HIGH PERFORMANCE CAVITY WALL)

IN CHARGE:	MIM
DRAWN:	M.W.F.
APPROVED:	T.A.D.
DATE:	11/04/2014
TITLE:	BRICK EXPANSION JOINT LOCATION DETAILS
SHEET:	A-10



ISOMETRIC VIEW



SECTION VIEW

10A  
A-2

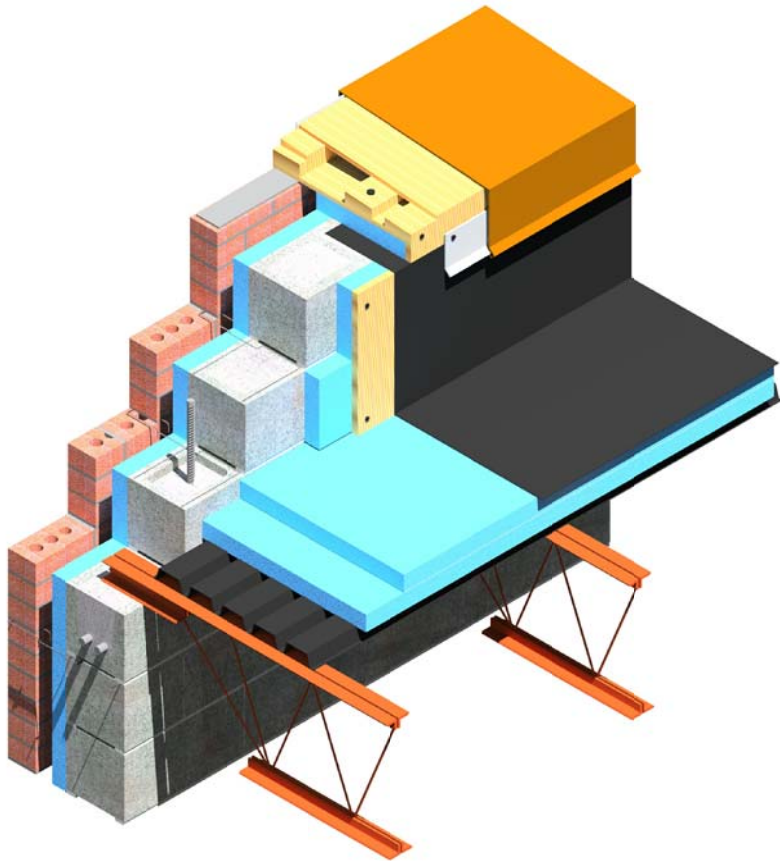
STONE / PRECAST  
COPING PARAPET DETAIL

DALEY ENGINEERING, INC.  
8485 STEPHENSON ROAD  
ONSTED, MI 49286  
PH. # (517) 467-9000  
FAX # (517) 467-9010

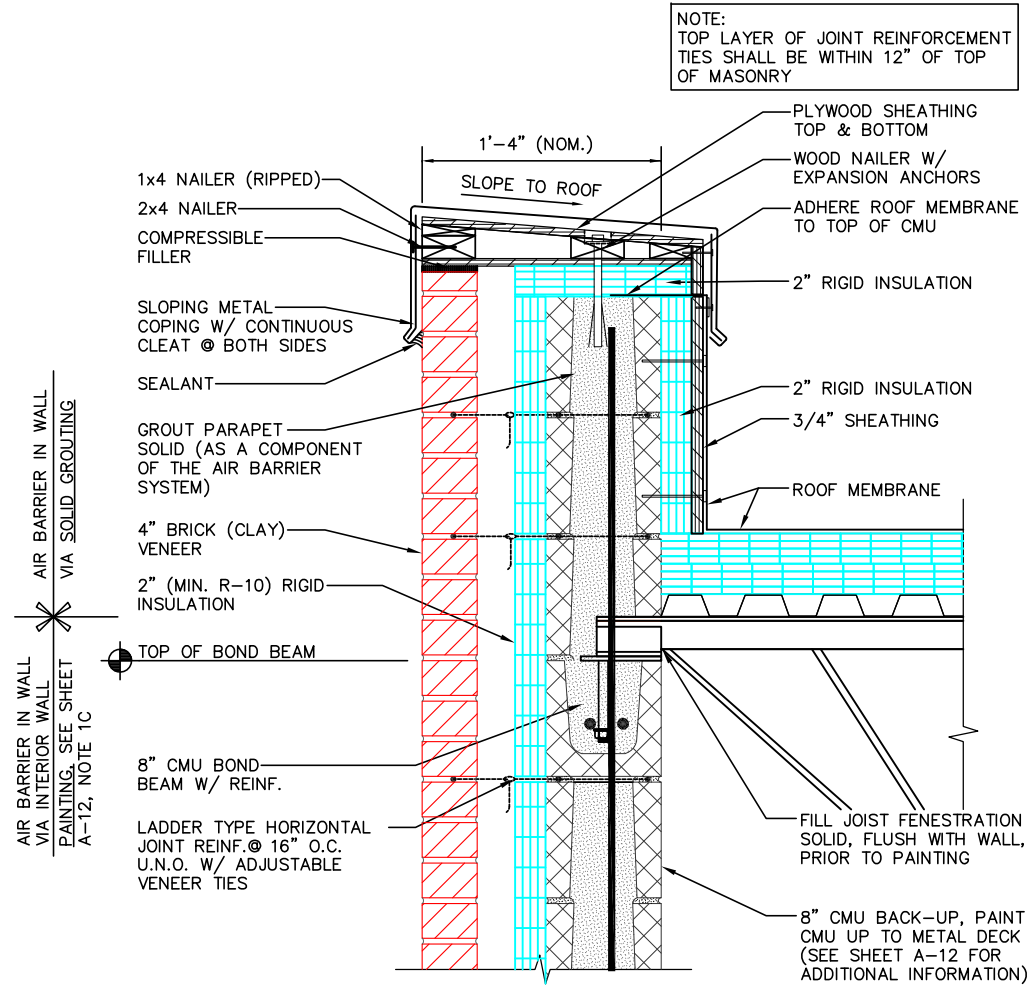
**111 MASONRY**  
Institute of Michigan

DETAIL SET MW.8.RB.2 (2" HIGH PERFORMANCE CAVITY WALL)

IN CHARGE:	MIM
DRAWN:	M.W.F.
APPROVED:	T.A.D.
DATE:	11/04/2014
TITLE:	STONE/PRE-CAST COPING PARAPET DETAIL
SHEET:	A-11.1



ISOMETRIC VIEW



SECTION VIEW

10B  
A-2 METAL COPING PARAPET DETAIL

NOTE:  
TOP LAYER OF JOINT REINFORCEMENT  
TIES SHALL BE WITHIN 12" OF TOP  
OF MASONRY

DAILEY ENGINEERING, INC.  
8485 STEPHENSON ROAD  
ONSTED, MI 49286  
PH. # (517) 467-9000  
FAX # (517) 467-9010

**111 MASONRY**  
Institute of Michigan

DETAIL SET MW.8.RB.2 (2" HIGH PERFORMANCE CAVITY WALL)

IN CHARGE:	MIM
DRAWN:	M.W.F.
APPROVED:	T.A.D.
DATE:	11/04/2014
TITLE:	METAL COPING PARAPET DETAIL
SHEET:	A-11.2

## ADDITIONAL "CONTROL LAYER" INFORMATION

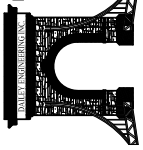
### 1) AIR CONTROL LAYER:

- A) THE AIR CONTROL LAYER IS OFTEN REFERED TO AS AN "AIR BARRIER". SEVERAL PRODUCTS AND OPTIONS (SUCH AS LIQUID OR MEMBRANE APPLIED PROPRIETARY SYSTEMS) ARE AVAILABLE, WITH DIFFERING LEVELS OF COST AND COMPLEXITY.
- B) THIS SET OF DETAILS REFLECTS AN AIR BARRIER SYSTEM ACHIEVED WITH SPECIFIC MASONRY DETAILING/CONSTRUCTION AND NON-PROPRIETARY COATINGS DESCRIBED IN NOTE C BELOW.
- C) THE FOLLOWING NON-PROPRIETARY COATINGS ARE CONSIDERED TO MEET AN AIR LEAKAGE OF LESS THAN 0.04 CFM/SQ. FT. @ 75 Pa. (SEE NCMA TEK 6-14A FOR ADDITIONAL INFORMATION)
- 1) PRESCRIPTIVE COMPLIANCE:
    - FULLY GROUTED CMU
    - CMU WALL WITH ONE APPLICATION OF BLOCK FILLER AND TWO APPLICATIONS OF A PAINT OR SEALER COATING
    - CMU WALL WITH A PORTLAND CEMENT/SAND PARGE, STUCCO OR PLASTER WITH A MINIMUM THICKNESS OF 1/2".
  - 2) BY LABORATORY TESTING:
    - 12" CMU SEALED WITH AT LEAST (2) COATS OF COMMERCIAL-GRADE LATEX PAINT.
    - 8" CMU COATED WITH A SINGLE COAT OF HIGH QUALITY LATEX PAINT.
    - 8" CMU COATED WITH A SINGLE COAT OF MASONRY BLOCK FILLER.

### 2) VAPOR CONTROL LAYER:

- A) BASED ON MULTIPLE DEW POINT ANALYSES FOR CLIMATE ZONE 5 (INCLUDING INDOOR HUMIDITY CONDITIONS VARYING FROM NON-HUMIDIFIED TO HIGH HUMIDITY), THE DEW POINT IN THIS CAVITY WALL SYSTEM OCCURS ONLY IN THE WET ZONE. THEREFORE A VAPOR CONTROL LAYER IS NOT NECESSARY. CAREFUL CONSIDERATION SHOULD BE GIVEN BEFORE INCLUDING A VAPOR RETARDER.

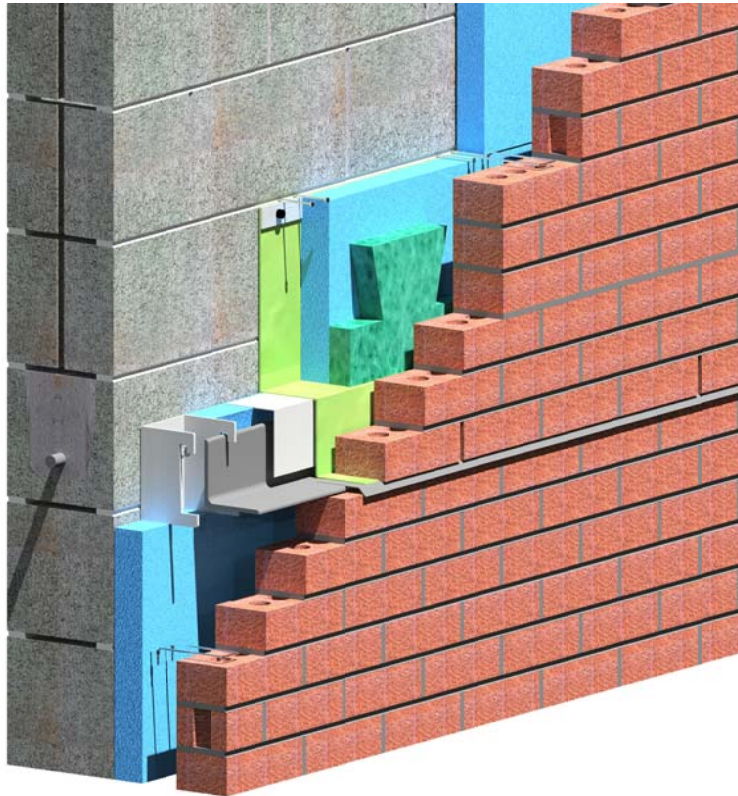
DAILEY ENGINEERING, INC.  
8485 STEPHENSON ROAD  
ONSTED, MI 49266  
PH. # (517) 467-9000  
FAX # (517) 467-9010



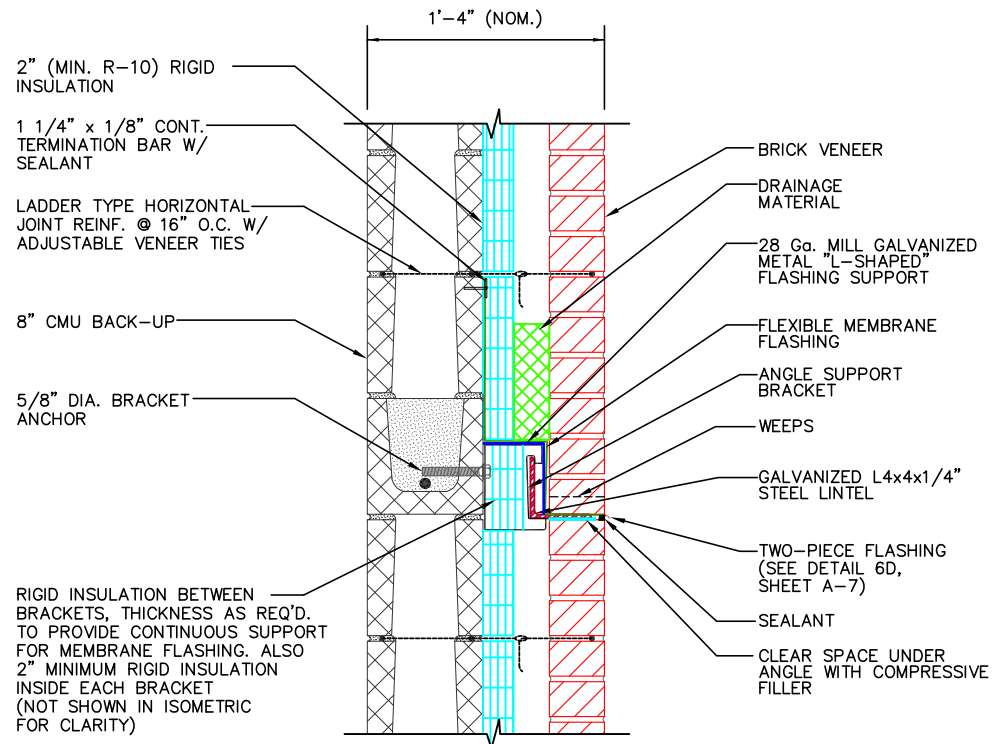
**111 MASONRY**  
Institute of Michigan

DETAIL SET MW.8.RB.2 (2" HIGH PERFORMANCE CAVITY WALL)

IN CHARGE:	MIM
DRAWN:	M.W.F.
APPROVED:	T.A.D.
DATE:	11/04/2014
TITLE:	WALL AIR CONTROL LAYER OPTIONS AND NOTES
SHEET:	A-12



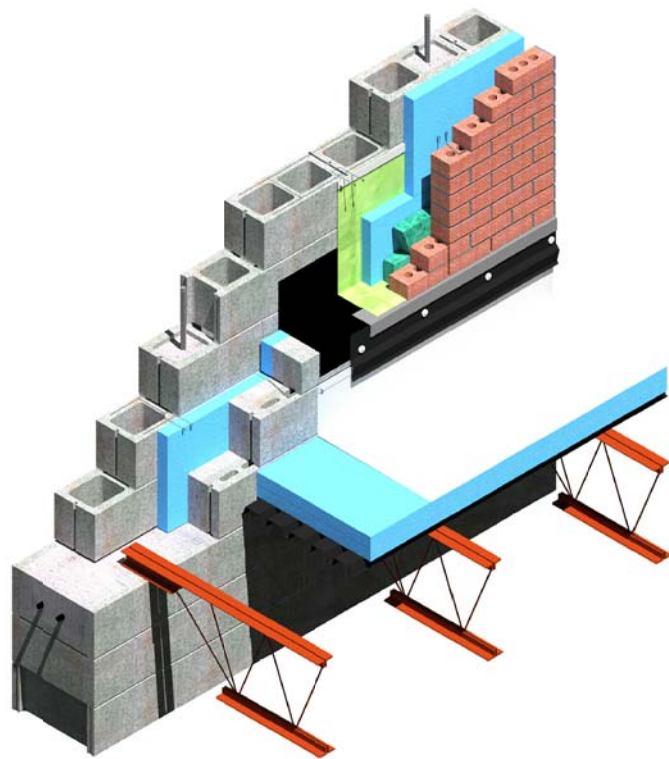
ISOMETRIC VIEW



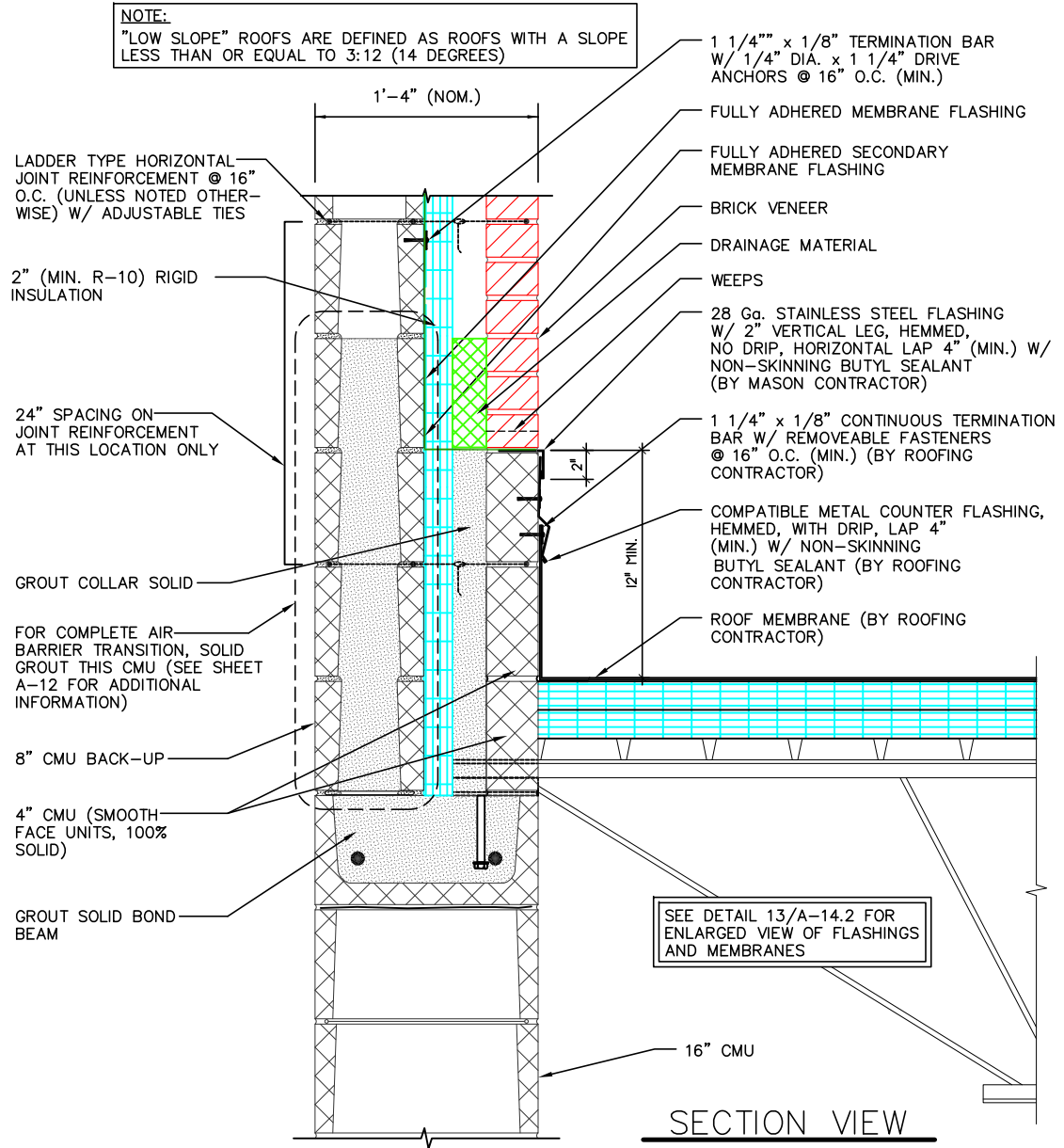
SECTION VIEW

11A  
A-13

BRICK LEDGER DETAILS FOR CMU BACK-UP DETAIL



ISOMETRIC VIEW



SECTION VIEW

12  
A-14.1

UPPER WALL /  
LOW ROOF FLASHING DETAIL

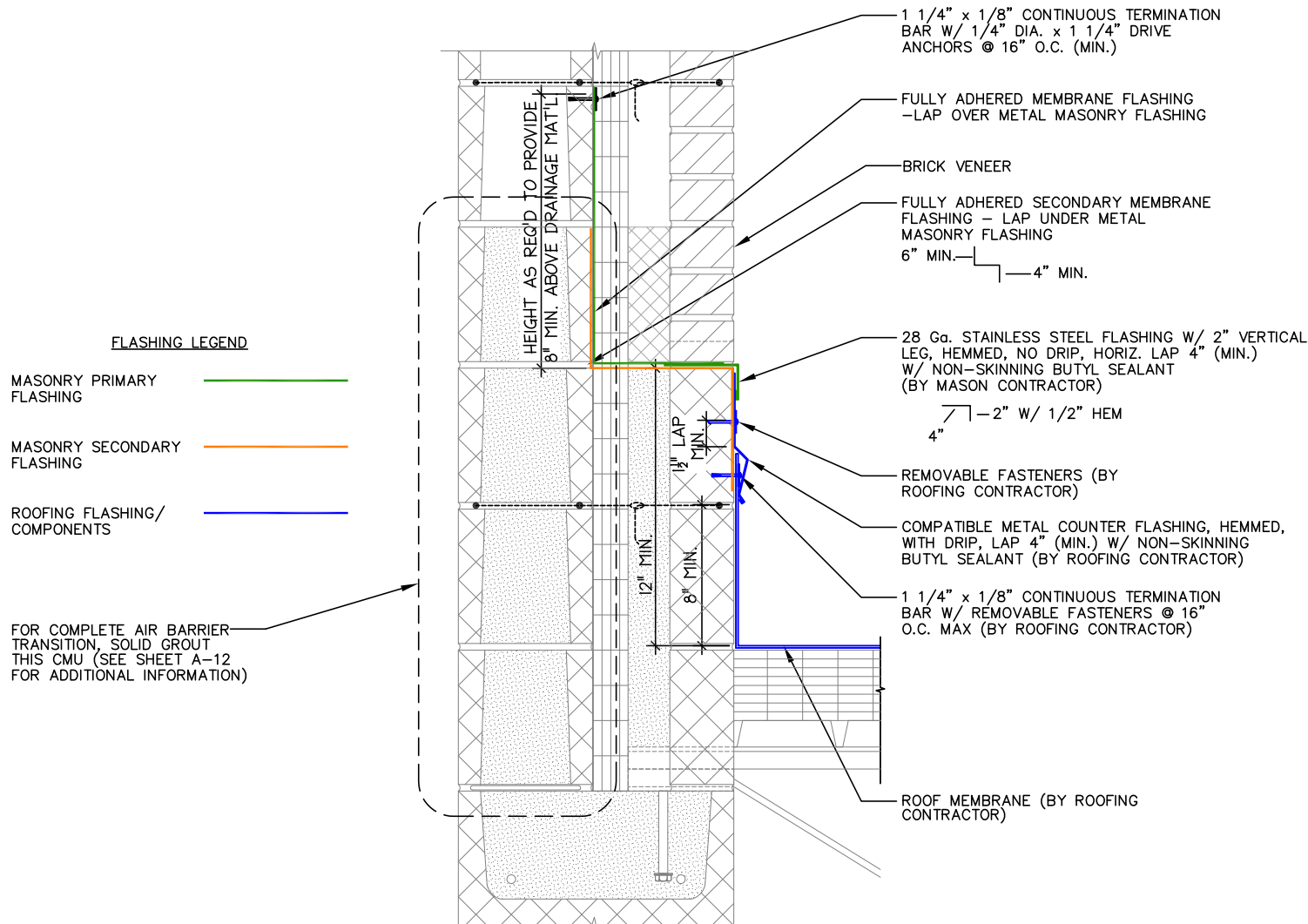
DALEY ENGINEERING, INC.  
8485 STEPHENSON ROAD  
ONSTED, MI 49266  
PH. # (517) 467-9000  
FAX # (517) 467-9010

**111 MASONRY**  
Institute of Michigan

DETAIL SET MW.8.RB.2 (2" HIGH PERFORMANCE CAVITY WALL)

IN CHARGE:	MIM
DRAWN:	M.W.F.
APPROVED:	T.A.D.
DATE:	11/04/2014
TITLE:	UPPER WALL / LOW ROOF FLASHING DETAIL
SHEET:	A-14.1

IN CHARGE:	MIM
DRAWN:	M.W.F.
APPROVED:	T.A.D.
DATE:	11/04/2014
TITLE:	UPPER WALL / LOW ROOF FLASHING DETAIL ENLARGED
SHEET:	A-14.2



13  
A-14.2

UPPER WALL / LOW ROOF  
FLASHING DETAIL ENLARGED